

Anti-KDR antibody (1150-1250) (STJ28277)

STJ28277

GENERAL INFORMATION

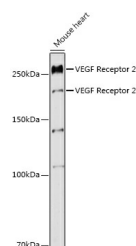
Product Type	Primary antibodies
Short Description	
Applications	WB/ELISA
Host/Source	Rabbit
Reactivity	Human/Mouse/Rat

PRODUCT PROPERTIES

Clonality	Polyclonal
Clone ID	
Concentration	Lot specific
Conjugation	Unconjugated
Purification	Affinity purification
Dilution Range	WB:1:500-1:1000 ELISA:Recommended starting concentration is 1 Mu g/mL. Please optimize the concentration based on your specific assay requirements.
Formulation	PBS with 0.09% Sodium Azide, 50% Glycerol, pH 7.3.
Isotype	IgG
Storage Instruction	Store at -20°C for up to 1 year from the date of receipt, and avoid repeat freeze-thaw cycles.

TARGET INFORMATION

Gene ID	3791
Gene Symbol	KDR
Uniprot ID	VGFR2_HUMAN
Immunogen	
Immunogen Region	1150-1250
Specificity	A synthetic peptide corresponding to a sequence within amino acids 1150-1250 of human VEGF Receptor 2 (NP_002244.1).
Immunogen Sequence	RPTFSELVEHLGNLLQANAQ QDGKDYIVLPISETLSMEED SGLSLPTSPVSCMEEVEVCD PKFHYDNTAGISQYLQNSKR KSRPVSVKTFEDIPLEEPEV K



Western blot analysis of extracts of mouse heart, using VEGF Receptor 2 antibody (STJ28277) at 1:1000 dilution. Secondary antibody: HRP Goat Anti-rabbit IgG (H+L) at 1:10000 dilution. Lysates/proteins: 25ug per lane. Blocking buffer: 3% nonfat dry milk in TBST. Detection: ECL Enhanced Kit. Exposure time: 180s.

This product is suitable for in-vitro studies under the RESEARCH USE ONLY [RUO] licence. This product must not be used as for diagnostic or other medical purposes.
St John's Laboratory Ltd, Knowledge Dock Business Centre, University Way, London, E16 2RD | Tel: 0208 223 3081