

Anti-ZEB1 antibody (800-900) (STJ28276)

STJ28276

GENERAL INFORMATION

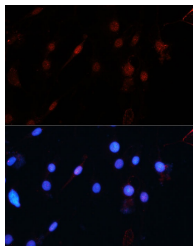
Product Type	Primary antibodies
Short Description	
Applications	WB/IHC-P/IF/CC/ELISA
Host/Source	Rabbit
Reactivity	Human/Mouse/Rat

PRODUCT PROPERTIES

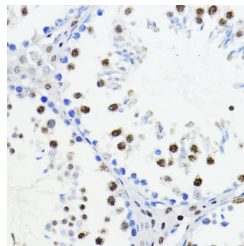
Clonality	Polyclonal
Clone ID	
Concentration	Lot specific
Conjugation	Unconjugated
Purification	Affinity purification
Dilution Range	WB:1:500-1:2000 IHC-P:1:50-1:200 IF/CC:1:50-1:200 ELISA:Recommended starting concentration is 1 µg/mL. Please optimize the concentration based on your specific assay requirements.
Formulation	PBS with 0.09% Sodium Azide, 50% Glycerol, pH 7.3.
Isotype	IgG
Storage Instruction	Store at -20°C for up to 1 year from the date of receipt, and avoid repeat freeze-thaw cycles.

TARGET INFORMATION

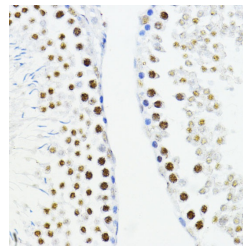
Gene ID	6935
Gene Symbol	ZEB1
Uniprot ID	ZEB1_HUMAN
Immunogen	
Immunogen Region	800-900
Specificity	A synthetic peptide corresponding to a sequence within amino acids 800-900 of human ZEB1 (NP_110378.3).
Immunogen Sequence	INIAIPTVTAQLPTIVAIAAD QNSVPCLRALAANKQTILIP QVAYTYSTTVSPAVQEPPLK VIQPNGNQDERQDTSSEGVN NVEDQNDSSTPPKKMRKT E



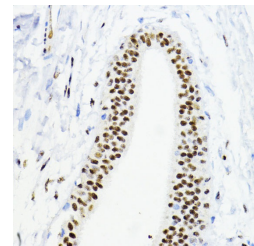
Immunofluorescence analysis of C6 cells using ZEB1 Rabbit polyclonal antibody (STJ28276) at dilution of 1:100 (40x lens). Secondary antibody: Cy3 Goat Anti-Rabbit IgG (H+L) at 1:500 dilution. Blue: DAPI for nuclear staining.



Immunohistochemistry analysis of ZEB1 in paraffin-embedded mouse testis using ZEB1 Rabbit polyclonal antibody (STJ28276) at dilution of 1:200 (40x lens). Perform microwave antigen retrieval with 10 mM PBS buffer pH 7.2 before commencing with immunohistochemistry staining protocol.



Immunohistochemistry analysis of ZEB1 in paraffin-embedded rat testis using ZEB1 Rabbit polyclonal antibody (STJ28276) at dilution of 1:200 (40x lens). Perform microwave antigen retrieval with 10 mM PBS buffer pH 7.2 before commencing with immunohistochemistry staining protocol.



Immunohistochemistry analysis of ZEB1 in paraffin-embedded human mammary cancer using ZEB1 Rabbit polyclonal antibody (STJ28276) at dilution of 1:200 (40x lens). Perform microwave antigen retrieval with 10 mM PBS buffer pH 7.2 before commencing with immunohistochemistry staining protocol.

This product is suitable for in-vitro studies under the RESEARCH USE ONLY [RUO] licence. This product must not be used as for diagnostic or other medical purposes.
St John's Laboratory Ltd, Knowledge Dock Business Centre, University Way, London, E16 2RD | Tel: 0208 223 3081