

Anti-JADE1 antibody (210-509) (STJ28259)

STJ28259

GENERAL INFORMATION

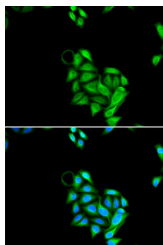
Product Type	Primary antibodies
Short Description	
Applications	WB/IF/ICC/ELISA
Host/Source	Rabbit
Reactivity	Human/Mouse

PRODUCT PROPERTIES

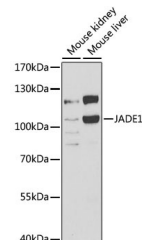
Clonality	Polyclonal
Clone ID	
Concentration	Lot specific
Conjugation	Unconjugated
Purification	Affinity purification
Dilution	WB:1:500-1:2000
Range	IF/CC:1:10-1:100
	ELISA:Recommended starting concentration is 1 μ g/mL. Please optimize the concentration based on your specific assay requirements.
Formulation	PBS with 0.02% Sodium Azide, 50% Glycerol, pH 7.3.
Isotype	IgG
Storage Instruction	Store at -20°C for up to 1 year from the date of receipt, and avoid repeat freeze-thaw cycles.

TARGET INFORMATION

Gene ID	79960
Gene Symbol	JADE1
Uniprot ID	JADE1_HUMAN
Immunogen	
Immunogen Region	210-509
Specificity	Recombinant fusion protein containing a sequence corresponding to amino acids 210-509 of human JADE1 (NP_079176.2).
Immunogen Sequence	QSPDGEDGNEMVFCDCNIC VHQACYGILKVPEGSWLCRT CALGVQPKCLLCPPKGGAMK PTRSGTKWWHVSCALWIPEV SIGSPEKMEPITKVSHIPSS RWALVCSLCNEKFGASIQCS VKNCRATFHVTCADFDRGLEM KTLAENDEVKFKSYCPKHS SHRKPEESLGKGAQENGAP ECSPRNPLEPFASLEQNREE AHRVSVRKQKLQQLLEDEFYT FVNLLDVARALRLPEEVVD



Immunofluorescence analysis of U2OS cells using JADE1 antibody (STJ28259). Blue: DAPI for nuclear staining.



Western blot analysis of extracts of various cell lines, using JADE1 antibody (STJ28259) at 1:1000 dilution. Secondary antibody: HRP Goat Anti-Rabbit IgG (H+L) (STJ3000896) at 1:10000 dilution. Lysates/proteins: 25 μ g per lane. Blocking buffer: 3% nonfat dry milk in TBST. Detection: ECL Basic Kit. Exposure time: 60s.

This product is suitable for in-vitro studies under the RESEARCH USE ONLY [RUO] licence. This product must not be used as for diagnostic or other medical purposes.
St John's Laboratory Ltd, Knowledge Dock Business Centre, University Way, London, E16 2RD | Tel: 0208 223 3081