

Anti-ZWINT antibody (1-277) (STJ28250)
STJ28250

GENERAL INFORMATION

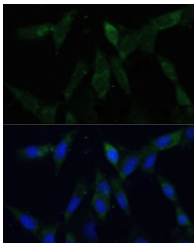
Product Type	Primary antibodies
Short Description	
Applications	WB/IF/ICC/ELISA
Host/Source	Rabbit
Reactivity	Human/Mouse/Rat

PRODUCT PROPERTIES

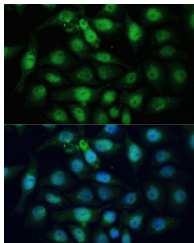
Clonality	Polyclonal
Clone ID	
Concentration	Lot specific
Conjugation	Unconjugated
Purification	Affinity purification
Dilution	WB:1:500-1:2000
Range	IF/CC:1:50-1:200
	ELISA:Recommended starting concentration is 1 Mu g/mL. Please optimize the concentration based on your specific assay requirements.
Formulation	PBS with 0.02% Sodium Azide, 50% Glycerol, pH 7.3.
Isotype	IgG
Storage Instruction	Store at -20°C for up to 1 year from the date of receipt, and avoid repeat freeze-thaw cycles.

TARGET INFORMATION

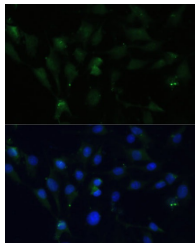
Gene ID	11130
Gene Symbol	ZWINT
Uniprot ID	ZWINT_HUMAN
Immunogen	
Immunogen Region	1-277
Specificity	Recombinant fusion protein containing a sequence corresponding to amino acids 1-277 of human ZWINT (NP_008988.2).
Immunogen Sequence	MEAAETEAEAAALEVLAEVA GILEPVGLQEEAELPAKILV EFVDSQKKDKLLCSQLQVA DFLQNILAQEDTAKGLDPLA SEDTSRQKAIAAKEQWKELK ATYREHV EAIKIGLTKALTQ MEEAQRKRTLREAFEQLQA KQKMAMEKRRAVQNQWQLQQ EKHLQHIAEVSAEVRERKTG TQQELDRV FQKLG NLKQQA E QERDKLQRYQ TFLQLLYTLQ GKLLFPEAEAEENLPDDK



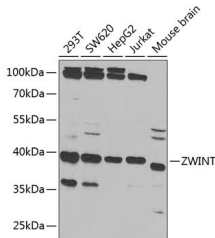
Immunofluorescence analysis of NIH-3T3 cells using ZWINT Polyclonal Antibody (STJ28250) at dilution of 1:100 (40x lens). Blue: DAPI for nuclear staining.



Immunofluorescence analysis of HeLa cells using ZWINT Polyclonal Antibody (STJ28250) at dilution of 1:100 (40x lens). Blue: DAPI for nuclear staining.



Immunofluorescence analysis of C6 cells using ZWINT Polyclonal Antibody (STJ28250) at dilution of 1:100 (40x lens). Blue: DAPI for nuclear staining.



Western blot analysis of extracts of various cell lines, using ZWINT antibody (STJ28250) at 1:1000 dilution. Secondary antibody: HRP Goat Anti-Rabbit IgG (H+L) (STJ5000856) at 1:10000 dilution. Lysates/proteins: 25 Mu g per lane. Blocking buffer: 3% nonfat dry milk in TBST.

This product is suitable for in-vitro studies under the RESEARCH USE ONLY [RUO] licence. This product must not be used as for diagnostic or other medical purposes.
St John's Laboratory Ltd, Knowledge Dock Business Centre, University Way, London, E16 2RD | Tel: 0208 223 3081