

Anti-TKT antibody (1-280) (STJ28236)

STJ28236

GENERAL INFORMATION

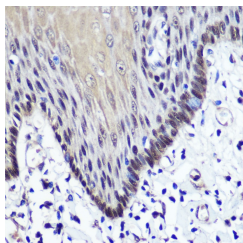
Product Type	Primary antibodies
Short Description	
Applications	WB/IHC-P/ELISA
Host/Source	Rabbit
Reactivity	Human/Mouse/Rat

PRODUCT PROPERTIES

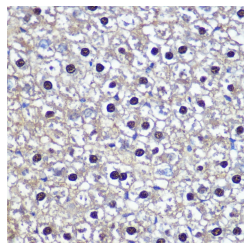
Clonality	Polyclonal
Clone ID	
Concentration	Lot specific
Conjugation	Unconjugated
Purification	Affinity purification
Dilution	WB:1:1000-1:5000
Range	IHC-P:1:50-1:200 ELISA:Recommended starting concentration is 1 µg/mL. Please optimize the concentration based on your specific assay requirements.
Formulation	PBS with 0.09% Sodium Azide, 50% Glycerol, pH 7.3.
Isotype	IgG
Storage Instruction	Store at -20°C for up to 1 year from the date of receipt, and avoid repeat freeze-thaw cycles.

TARGET INFORMATION

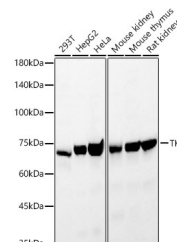
Gene ID	7086
Gene Symbol	TKT
Uniprot ID	TKT_HUMAN
Immunogen	
Immunogen Region	1-280
Specificity	Recombinant fusion protein containing a sequence corresponding to amino acids 1-280 of human TKT (NP_001128527.1).
Immunogen Sequence	MESYHKPDQKQLQALKDTAN RLRISIQATTAAGSGHPTS CCSAAEIMAVLFFHTMRYKS QDPRNPHNDRFVLSKGHAAP ILYAVWAEAGFLAEALLNL RKISSDLGDGHPVPKQAFDTV ATGSLGQGLGAACGMAYTGK YFDKASYRVYCLLDGDELSE GSWWEAMAFASIYKLDNLVA ILINRLGQSDPAPLQHQMD IYQKRCEAFGWHAIVDGHS VEELCKAFGQAKHQPTAI



Immunohistochemistry analysis of paraffin-embedded Human esophageal using TKT antibody (STJ28236) at dilution of 1:100 (40x lens). Perform microwave antigen retrieval with 10 mM PBS buffer pH 7.2 before commencing with immunohistochemistry staining protocol.



Immunohistochemistry analysis of paraffin-embedded Rat liver using TKT antibody (STJ28236) at dilution of 1:100 (40x lens). Perform microwave antigen retrieval with 10 mM PBS buffer pH 7.2 before commencing with immunohistochemistry staining protocol.



Western blot analysis of various lysates, using TKT Rabbit polyclonal antibody (STJ28236) at 1:2000 dilution. Secondary antibody: HRP Goat Anti-Rabbit IgG (H+L) (STJ5000856) at 1:10000 dilution. Lysates/proteins: 25µg per lane. Blocking buffer: 3% nonfat dry milk in TBST. Detection: ECL Basic Kit. Exposure time: 30s.

This product is suitable for in-vitro studies under the RESEARCH USE ONLY [RUO] licence. This product must not be used as for diagnostic or other medical purposes.

St John's Laboratory Ltd, Knowledge Dock Business Centre, University Way, London, E16 2RD | Tel: 0208 223 3081