

Anti-ADSL antibody (1-310) (STJ28200)
STJ28200

GENERAL INFORMATION

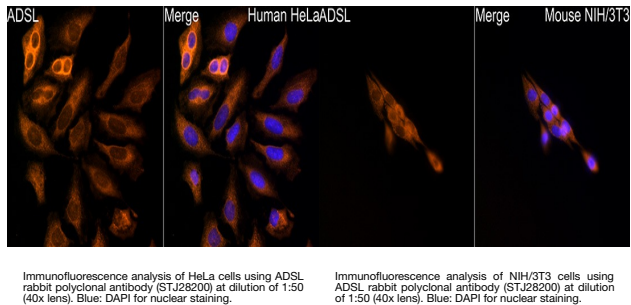
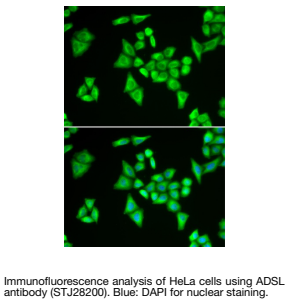
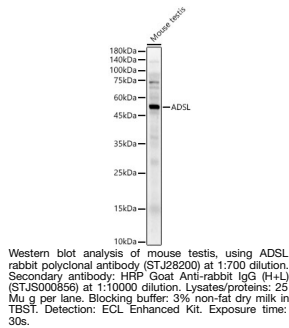
Product Type	Primary antibodies
Short Description	
Applications	WB/IF/ICC/ELISA
Host/Source	Rabbit
Reactivity	Human/Mouse/Rat

PRODUCT PROPERTIES

Clonality	Polyclonal
Clone ID	
Concentration	Lot specific
Conjugation	Unconjugated
Purification	Affinity purification
Dilution	WB: 1:500-1:1000
Range	IF/ICC: 1:20-1:100 ELISA: Recommended starting concentration is 1 μ g/mL. Please optimize the concentration based on your specific assay requirements.
Formulation	PBS with 0.02% Sodium Azide, 50% Glycerol, pH 7.3.
Isotype	IgG
Storage Instruction	Store at -20°C for up to 1 year from the date of receipt, and avoid repeat freeze-thaw cycles.

TARGET INFORMATION

Gene ID	158
Gene Symbol	ADSL
Uniprot ID	PUR8_HUMAN
Immunogen	
Immunogen Region	1-310
Specificity	Recombinant fusion protein containing a sequence corresponding to amino acids 1-310 of human ADSL (NP_000017.1).
Immunogen Sequence	MAAGGDHGSPDSYRSLASR YASPEMCFVFSRDYKFRWTWR QLWLWLAEEQTLGLPITDE QIQEMKSNLENIDFKMAAEE EKRLRHDMVAHVHTFGHCCP KAAGIIHLGATSCYVGDNLD LIILRNALDLLLPKLARVIS RLADFAKERASLPTLGFTHF QPAQLTTVGKRCCLWIQDLC MDLQNLKRVRRDLRFGRVKG TTGTQASFLQLFEGDDHKVE QLDKMVTEKAGFKRAFIIT



This product is suitable for in-vitro studies under the RESEARCH USE ONLY [RUO] licence. This product must not be used as for diagnostic or other medical purposes.
St John's Laboratory Ltd, Knowledge Dock Business Centre, University Way, London, E16 2RD | Tel: 0208 223 3081