

Anti-LHCGR antibody (200-360) (STJ28188)

STJ28188

GENERAL INFORMATION

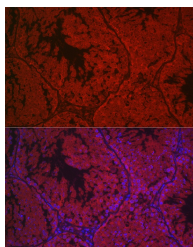
Product Type	Primary antibodies
Short Description	
Applications	WB/IF/ICC/ELISA
Host/Source	Rabbit
Reactivity	Human/Mouse/Rat

PRODUCT PROPERTIES

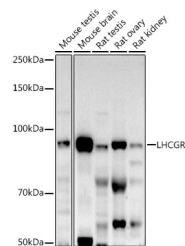
Clonality	Polyclonal
Clone ID	
Concentration	Lot specific
Conjugation	Unconjugated
Purification	Affinity purification
Dilution	WB:1:100-1:500
Range	IF/ICC:1:100-1:500
	ELISA:Recommended starting concentration is 1 μ g/mL. Please optimize the concentration based on your specific assay requirements.
Formulation	PBS with 0.05% Proclin300, 50% Glycerol, pH 7.3.
Isotype	IgG
Storage Instruction	Store at -20°C for up to 1 year from the date of receipt, and avoid repeat freeze-thaw cycles.

TARGET INFORMATION

Gene ID	3973
Gene Symbol	LHCGR
Uniprot ID	LSHR_HUMAN
Immunogen	
Immunogen Region	200-360
Specificity	Recombinant fusion protein containing a sequence corresponding to amino acids 200-360 of human LHCGR (NP_000224.2).
Immunogen Sequence	TSLELKENVHLEKMHNGAFR GATGPKTLDISSTKLQALPS YGLESIQRLIATSSYSLLKKL PSRETFVNLLLEATLTYP SHC CAFRNLP TKEQNF SHSISEN FSKQCESTVRKVNNKTL YSS MLAESELSGWDY EYGFCLPK TPRCAPEPDAFNPCEDIMGY D



Immunofluorescence analysis of mouse testis cells using LHCGR Rabbit polyclonal antibody (STJ28188) at dilution of 1:500 (40x lens). Blue: DAPI for nuclear staining.



Western blot analysis of extracts of various cell lines, using LHCGR antibody (STJ28188) at 1:500 dilution. Secondary antibody: HRP-Goat Anti-Rabbit IgG (H+L) (STJS000856) at 1:10000 dilution. Lysates/proteins: 25 μ g per lane. Blocking buffer: 3% nonfat dry milk in TBST. Detection: ECL Enhanced Kit. Exposure time: 90s.

This product is suitable for in-vitro studies under the RESEARCH USE ONLY [RUO] licence. This product must not be used as for diagnostic or other medical purposes.
St John's Laboratory Ltd, Knowledge Dock Business Centre, University Way, London, E16 2RD | Tel: 0208 223 3081