

Anti-HSD17B13 antibody (30-211) (STJ28012)

STJ28012

GENERAL INFORMATION

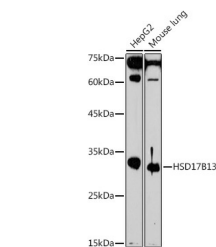
Product Type	Primary antibodies
Short Description	
Applications	WB/IHC-P/IF/ICC/ELISA
Host/Source	Rabbit
Reactivity	Human/Mouse/Rat

PRODUCT PROPERTIES

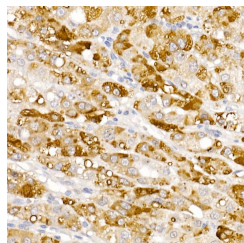
Clonality	Polyclonal
Clone ID	
Concentration	Lot specific
Conjugation	Unconjugated
Purification	Affinity purification
Dilution	WB:1:500-1:1000
Range	IHC-P:1:50-1:200 IF/ICC:1:50-1:200 ELISA:Recommended starting concentration is 1 µg/mL. Please optimize the concentration based on your specific assay requirements.
Formulation	PBS with 0.05% Proclin300, 50% Glycerol, pH 7.3.
Isotype	IgG
Storage	Store at -20°C for up to 1 year from the date of receipt, and avoid repeat freeze-thaw cycles.
Instruction	

TARGET INFORMATION

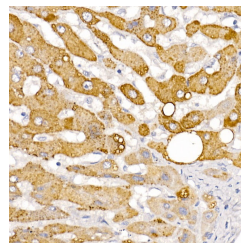
Gene ID	345275
Gene Symbol	HSD17B13
Uniprot ID	DHB13_HUMAN
Immunogen	
Immunogen Region	30-211
Specificity	Recombinant fusion protein containing a sequence corresponding to amino acids 30-211 of human HSD17B13 (NP_835236.2).
Immunogen Sequence	RRKSVAGEIVLTGAGHGIG RQTTYEFAKRQSLVLWDIN KRGVEETAAECRKLGVTAHA YVVDGCSNREEIYRSLNQVKK EVDGTVIVNNAGTVYPADL LSTKDEEITKTFEVNLGHF WITKALLPSMMERNHGHIVT VASVCGHEGIPYLIPYCSSK FAAVGFHRLTSELQALGKT GI



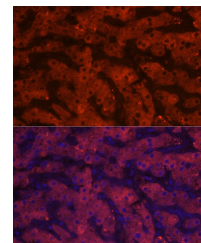
Western blot analysis of extracts of various cell lines, using HSD17B13 antibody (STJ28012) at 1:1000 dilution. Secondary antibody: HRP Goat Anti-rabbit IgG (H+L) (STJ500856) at 1:10000 dilution. Lysates/proteins: 25 µg per lane. Blocking buffer: 3% non-fat dry milk in TBST. Detection: ECL Basic Kit. Exposure time: 180s.



Immunohistochemistry analysis of paraffin-embedded human liver cancer using HSD17B13 rabbit polyclonal antibody (STJ28012) at dilution of 1:100 (40x lens). Perform high pressure antigen retrieval with 10 mM citrate buffer pH 6.0 before commencing with immunohistochemistry staining protocol.



Immunohistochemistry analysis of paraffin-embedded human liver using HSD17B13 rabbit polyclonal antibody (STJ28012) at dilution of 1:100 (40x lens). Perform high pressure antigen retrieval with 10 mM citrate buffer pH 6.0 before commencing with immunohistochemistry staining protocol.



Immunofluorescence analysis of human liver cells using HSD17B13 rabbit polyclonal antibody (STJ28012) at dilution of 1:20 (40x lens). Blue: DAPI for nuclear staining.

This product is suitable for in-vitro studies under the RESEARCH USE ONLY [RUO] licence. This product must not be used as for diagnostic or other medical purposes.
St John's Laboratory Ltd, Knowledge Dock Business Centre, University Way, London, E16 2RD | Tel: 0208 223 3081