

Anti-IL22 antibody (34-179) (STJ27972)

STJ27972

GENERAL INFORMATION

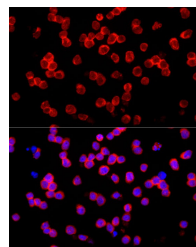
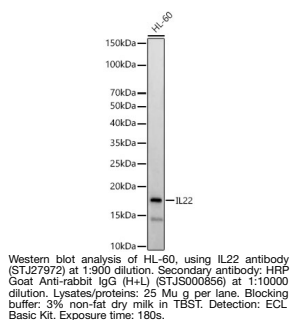
Product Type	Primary antibodies
Short Description	
Applications	WB/IF/ICC/ELISA
Host/Source	Rabbit
Reactivity	Human/Mouse/Rat

PRODUCT PROPERTIES

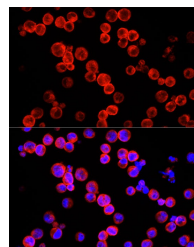
Clonality	Polyclonal
Clone ID	
Concentration	Lot specific
Conjugation	Unconjugated
Purification	Affinity purification
Dilution	WB:1:500-1:1000
Range	IF/CC:1:50-1:200
	ELISA:Recommended starting concentration is 1 μ g/mL. Please optimize the concentration based on your specific assay requirements.
Formulation	PBS with 0.05% Proclin300, 50% Glycerol, pH 7.3.
Isotype	IgG
Storage Instruction	Store at -20°C for up to 1 year from the date of receipt, and avoid repeat freeze-thaw cycles.

TARGET INFORMATION

Gene ID	50616
Gene Symbol	IL22
Uniprot ID	IL22_HUMAN
Immunogen	
Immunogen Region	34-179
Specificity	Recombinant fusion protein containing a sequence corresponding to amino acids 34-179 of human IL22 (NP_065386.1).
Immunogen Sequence	APISSHCRDLKSNFQQPYYT NRTFMLAKEASLADNNTDVR LIGKLFHGVSMSERCYLMK QVLNFTLEEVLPQSDRFQP YMQEVVPFLARLSNRLSTCH IEGDDLHIQRNVQKLKDTVK KLGESGEIKAIGELDLLFMS LRNACI



Immunofluorescence analysis of HL-60 cells using IL22 rabbit polyclonal antibody (STJ27972) at dilution of 1:100 (40x lens). Blue: DAPI for nuclear staining.



Immunofluorescence analysis of Raji cells using IL22 rabbit polyclonal antibody (STJ27972) at dilution of 1:100 (40x lens). Blue: DAPI for nuclear staining.

This product is suitable for in-vitro studies under the RESEARCH USE ONLY [RUO] licence. This product must not be used as for diagnostic or other medical purposes.
St John's Laboratory Ltd, Knowledge Dock Business Centre, University Way, London, E16 2RD | Tel: 0208 223 3081