

Anti-SERPINE1 antibody (24-199) (STJ27967)

STJ27967

GENERAL INFORMATION

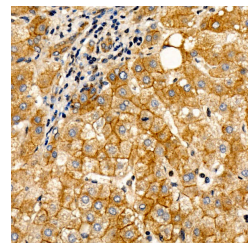
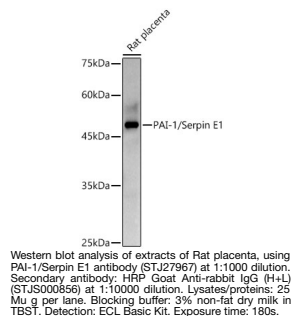
| | |
|--------------------------|--------------------|
| Product Type | Primary antibodies |
| Short Description | |
| Applications | WB/IF/ICC/ELISA |
| Host/Source | Rabbit |
| Reactivity | Human/Mouse/Rat |

PRODUCT PROPERTIES

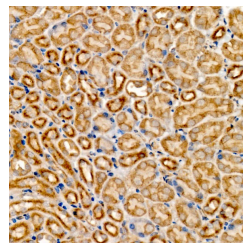
| | |
|----------------------------|---|
| Clonality | Polyclonal |
| Clone ID | |
| Concentration | Lot specific |
| Conjugation | Unconjugated |
| Purification | Affinity purification |
| Dilution Range | WB:1:500-1:1000 IF/CC:1:50-1:200 ELISA:Recommended starting concentration is 1 μ g/mL. Please optimize the concentration based on your specific assay requirements. |
| Formulation | PBS with 0.05% Proclin300, 50% Glycerol, pH 7.3. |
| Isotype | IgG |
| Storage Instruction | Store at -20°C for up to 1 year from the date of receipt, and avoid repeat freeze-thaw cycles. |

TARGET INFORMATION

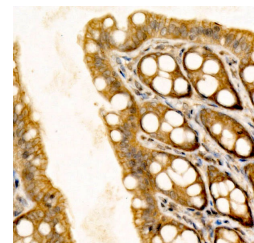
| | |
|---------------------------|--|
| Gene ID | 5054 |
| Gene Symbol | SERPINE1 |
| Uniprot ID | PAI1_HUMAN |
| Immunogen | |
| Immunogen Region | 24-199 |
| Specificity | A synthetic peptide corresponding to a sequence within amino acids 24-199 of human PAI-1/Serpin E1 (NP_000593.1). |
| Immunogen Sequence | AQASKDRNVFSPYGVASVL AMLQLTTGGETQQQQAAMG FKIDDKGMAPALRHLYKELM GPWNKDEISTTDAIFVQRDL KLVQGFMPHFRLFRSTVKQ VDFSEVERARFIINDWVKTH TKGMISNLLGKGAVDQLTRL VLVNLYFNGQWKTPFPDSS THRRFLFKSDGSTVSV |



Immunohistochemistry analysis of PAI-1/Serpin E1 in paraffin-embedded human liver tissue using PAI-1/Serpin E1 rabbit polyclonal antibody (STJ27967) at a dilution of 1:300 (40x lens). High pressure antigen retrieval was performed with 0.01 M citrate buffer (pH 6.0) prior to immunohistochemistry staining.



Immunohistochemistry analysis of PAI-1/Serpin E1 in paraffin-embedded mouse kidney tissue using PAI-1/Serpin E1 rabbit polyclonal antibody (STJ27967) at a dilution of 1:300 (40x lens). High pressure antigen retrieval was performed with 0.01 M citrate buffer (pH 6.0) prior to immunohistochemistry staining.



Immunohistochemistry analysis of PAI-1/Serpin E1 in paraffin-embedded rat colon tissue using PAI-1/Serpin E1 rabbit polyclonal antibody (STJ27967) at a dilution of 1:300 (40x lens). High pressure antigen retrieval was performed with 0.01 M citrate buffer (pH 6.0) prior to immunohistochemistry staining.

This product is suitable for in-vitro studies under the RESEARCH USE ONLY [RUO] licence. This product must not be used as for diagnostic or other medical purposes.
St John's Laboratory Ltd, Knowledge Dock Business Centre, University Way, London, E16 2RD | Tel: 0208 223 3081