

Anti-COMT antibody (42-221) (STJ27956)
STJ27956

GENERAL INFORMATION

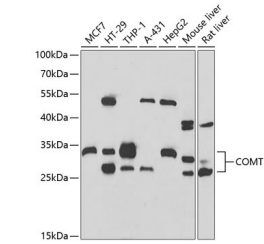
Product Type	Primary antibodies
Short Description	
Applications	WB/ELISA
Host/Source	Rabbit
Reactivity	Human/Mouse/Rat

PRODUCT PROPERTIES

Clonality	Polyclonal
Clone ID	
Concentration	Lot specific
Conjugation	Unconjugated
Purification	Affinity purification
Dilution	WB:1:500-1:2000
Range	ELISA:Recommended starting concentration is 1 μ g/mL. Please optimize the concentration based on your specific assay requirements.
Formulation	PBS with 0.02% Sodium Azide, 50% Glycerol, pH 7.3.
Isotype	IgG
Storage	Store at -20°C for up to 1 year from the date of receipt, and avoid repeat freeze-thaw cycles.
Instruction	

TARGET INFORMATION

Gene ID	1312
Gene Symbol	COMT
Uniprot ID	COMT_HUMAN
Immunogen	
Immunogen Region	42-221
Specificity	Recombinant fusion protein containing a sequence corresponding to amino acids 42-221 of human COMT (NP_009294.1). VGDKKGGKIVDAVIQEHQPSV LLELGAYCGYSAVRMARLLS PGARLITIEINPDCAAITQR MVDFAGVKDKVTLVVGASQD
Immunogen Sequence	IIPQLKKKYDVTLDMMVFLD HWKDRYLPDTLLLEECGLLR KGTVLLADNVICPGAPDFLA HVRGSSCFECTHYQSFLFYR EWDGLEKAIYKGGPGSEAGP



Western blot analysis of extracts of various cell lines, using COMT antibody (STJ27956) at 1:1000 dilution. Secondary antibody: HRP Goat Anti-Rabbit IgG (H+L) (STJ5000856) at 1:10000 dilution. Lysates/proteins: 25 μ g per lane. Blocking buffer: 3% nonfat dry milk in TBST. Detection: ECL Basic Kit. Exposure time: 60s.

This product is suitable for in-vitro studies under the RESEARCH USE ONLY [RUO] licence. This product must not be used as for diagnostic or other medical purposes.
St John's Laboratory Ltd, Knowledge Dock Business Centre, University Way, London, E16 2RD | Tel: 0208 223 3081