

Anti-SMYD5 antibody (300-400 aa) (STJ27952)

STJ27952

GENERAL INFORMATION

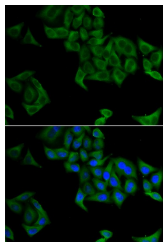
Product Type	Primary antibodies
Short Description	
Applications	IF/ICC/ELISA
Host/Source	Rabbit
Reactivity	Human

PRODUCT PROPERTIES

Clonality	Polyclonal
Clone ID	
Concentration	Lot specific
Conjugation	Unconjugated
Purification	Affinity purification
Dilution Range	WB:1:500-1:2000 IF/ICC:1:50-1:200 ELISA:Recommended starting concentration is 1 µg/mL. Please optimize the concentration based on your specific assay requirements.
Formulation	PBS with 0.02% Sodium Azide, 50% Glycerol, pH 7.3.
Isotype	IgG
Storage Instruction	Store at -20°C for up to 1 year from the date of receipt, and avoid repeat freeze-thaw cycles.

TARGET INFORMATION

Gene ID	10322
Gene Symbol	SMYD5
Uniprot ID	SMYD5_HUMAN
Immunogen	
Immunogen Region	300-400 aa
Specificity	Recombinant fusion protein containing a sequence corresponding to amino acids 300-400 of human SMYD5 (NP_006053.2).
Immunogen Sequence	LNCEGSGFLFVLQSCCNHSCV PNAETSPENNFLHVTALE DIKPGEEICISYLDCCQRER SRHSRHKILRENYLFCSCP KCLAEADEPNVTSEEEEEEE E



Immunofluorescence analysis of A549 cells using SMYD5 antibody (STJ27952). Blue: DAPI for nuclear staining.

This product is suitable for in-vitro studies under the RESEARCH USE ONLY [RUO] licence. This product must not be used as for diagnostic or other medical purposes.
St John's Laboratory Ltd, Knowledge Dock Business Centre, University Way, London, E16 2RD | Tel: 0208 223 3081