

Anti-OSM antibody (26-252) (STJ27935)

GENERAL INFORMATION

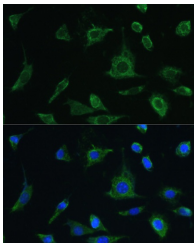
Product Type	Primary antibodies
Short Description	
Applications	WB/IF/ICC/ELISA
Host/Source	Rabbit
Reactivity	Human/Mouse/Rat

PRODUCT PROPERTIES

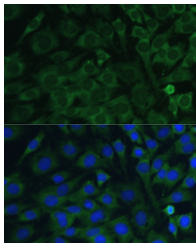
Clonality	Polyclonal
Clone ID	
Concentration	Lot specific
Conjugation	Unconjugated
Purification	Affinity purification
Dilution	WB:1:500-1:2000
Range	IF/CC:1:50-1:200
	ELISA:Recommended starting concentration is 1 Mu g/mL. Please optimize the concentration based on your specific assay requirements.
Formulation	PBS with 0.02% Sodium Azide, 50% Glycerol, pH 7.3.
Isotype	IgG
Storage Instruction	Store at -20°C for up to 1 year from the date of receipt, and avoid repeat freeze-thaw cycles.

TARGET INFORMATION

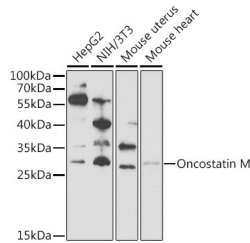
Gene ID	5008
Gene Symbol	OSM
Uniprot ID	ONCM_HUMAN
Immunogen Region	26-252
Specificity	Recombinant fusion protein containing a sequence corresponding to amino acids 26-252 of human Oncostatin M (NP_065391.1).
Immunogen Sequence	AAIGSCSKEYRVLLGQLQKQ TDLMQDTSRLDPYIRIQGL DVPKLRHCRRERPGAFPSEE TLRGLGRRGFLQTLNATLGC VLHRLADLEQRLPKAQDLER SGLNIEDLEKLQMARPNILG LRNNIYCMALLDNSDTAEP TKAGRGASQPPTPTPASDAF QRKLEGCRFLHGYHRFMHSV GRVFSKWGESPNRSRRHSPH QALRKGVRRTRPSRKGKRLM TRGQLPR



Immunofluorescence analysis of L-929 cells using Oncostatin M antibody (STJ27935) at dilution of 1:100. Blue: DAPI for nuclear staining.



Immunofluorescence analysis of C6 cells using Oncostatin M antibody (STJ27935) at dilution of 1:100. Blue: DAPI for nuclear staining.



Western blot analysis of extracts of various cell lines, using Oncostatin M Antibody (STJ27935) at 1:1000 dilution. Secondary antibody: HRP Goat Anti-Rabbit IgG (H+L) (STJ5000856) at 1:10000 dilution. Lysates/proteins: 25 Mu g per lane. Blocking buffer: 3% nonfat dry milk in TBST. Detection: ECL Enhanced Kit. Exposure time: 60s.