

Anti-RPS6 antibody (1-130) (STJ27852)

STJ27852

GENERAL INFORMATION

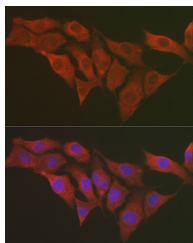
Product Type	Primary antibodies
Short Description	
Applications	WB/IHC-P/IF/ICC/ELISA
Host/Source	Rabbit
Reactivity	Human/Mouse/Rat

PRODUCT PROPERTIES

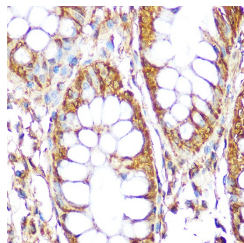
Clonality	Polyclonal
Clone ID	
Concentration	Lot specific
Conjugation	Unconjugated
Purification	Affinity purification
Dilution Range	WB:1:500-1:1000 IHC-P:1:50-1:200 IF/ICC:1:50-1:200 ELISA:Recommended starting concentration is 1 Mu g/mL. Please optimize the concentration based on your specific assay requirements.
Formulation	PBS with 0.09% Sodium Azide, 50% Glycerol, pH 7.3.
Isotype	IgG
Storage	Store at -20°C for up to 1 year from the date of receipt, and avoid repeat freeze-thaw cycles.
Instruction	

TARGET INFORMATION

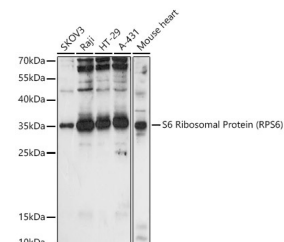
Gene ID	6194
Gene Symbol	RPS6
Uniprot ID	RS6_HUMAN
Immunogen	
Immunogen Region	1-130
Specificity	A synthetic peptide corresponding to a sequence within amino acids 1-130 of human RPS6 (NP_001001.2).
Immunogen Sequence	MKLNISFPATGCQKLVDD ERKLRTFYEKRMATEVAADA LGEEWKGYVVRISGGNDKQG FPMKQGVLTGHRVRLLSKG HSCYRPRRTGERKRKSVRGIC IDVANLSVLNLVIVKKGEKD IPGLTDTTVP



Immunofluorescence analysis of NIH/3T3 cells using S6 Ribosomal Protein (RPS6) Rabbit polyclonal antibody (STJ27852) at dilution of 1:100 (40x lens). Blue: DAPI for nuclear staining.



Immunohistochemistry analysis of paraffin-embedded human colon using S6 Ribosomal Protein (RPS6) Rabbit polyclonal antibody (STJ27852) at dilution of 1:100 (40x lens). Perform microwave antigen retrieval with 10 mM Tris/EDTA buffer pH 9, 0 before commencing with immunohistochemistry staining protocol.



Western blot analysis of extracts of various cell lines, using S6 Ribosomal Protein (RPS6) antibody (STJ27852) at 1:1000 dilution. Secondary antibody: HRP Goat Anti-Rabbit IgG (H+L) (STJ5000656) at 1:10000 dilution. Lysates/proteins: 25 Mu g per lane. Blocking buffer: 3% nonfat dry milk in TBST. Detection: ECL Basic Kit. Exposure time: 90s.

This product is suitable for in-vitro studies under the RESEARCH USE ONLY [RUO] licence. This product must not be used as for diagnostic or other medical purposes.

St John's Laboratory Ltd, Knowledge Dock Business Centre, University Way, London, E16 2RD | Tel: 0208 223 3081