

**Anti-PTBP2 antibody (1-280) (STJ27848)**  
STJ27848

**GENERAL INFORMATION**

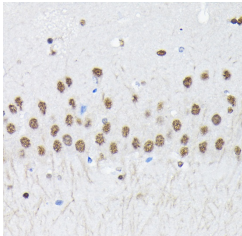
<b>Product Type</b>	Primary antibodies
<b>Short Description</b>	
<b>Applications</b>	WB/IHC-P/ELISA
<b>Host/Source</b>	Rabbit
<b>Reactivity</b>	Human/Mouse/Rat

**PRODUCT PROPERTIES**

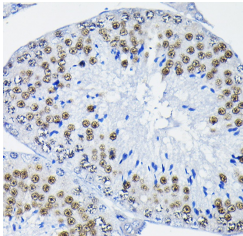
<b>Clonality</b>	Polyclonal
<b>Clone ID</b>	
<b>Concentration</b>	Lot specific
<b>Conjugation</b>	Unconjugated
<b>Purification</b>	Affinity purification
<b>Dilution</b>	WB:1:1000-1:5000
<b>Range</b>	IHC-P:1:50-1:200 ELISA:Recommended starting concentration is 1 $\mu$ g/mL. Please optimize the concentration based on your specific assay requirements.
<b>Formulation</b>	PBS with 0.02% Sodium Azide, 50% Glycerol, pH 7.3.
<b>Isotype</b>	IgG
<b>Storage Instruction</b>	Store at -20°C for up to 1 year from the date of receipt, and avoid repeat freeze-thaw cycles.

**TARGET INFORMATION**

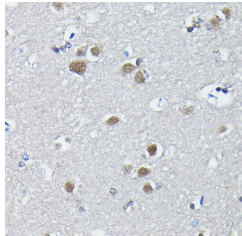
<b>Gene ID</b>	58155
<b>Gene Symbol</b>	PTBP2
<b>Uniprot ID</b>	PTBP2_HUMAN
<b>Immunogen</b>	
<b>Immunogen Region</b>	1-280
<b>Specificity</b>	Recombinant fusion protein containing a sequence corresponding to amino acids 1-280 of human PTBP2 (NP_001287918.1).
<b>Immunogen Sequence</b>	MDGIVTEVAVGVKRGSDLL SGSVLSSPNSNMSSMVVTAN GNDSKKFKGEDKMDGAPSRV LHIRKLPGEVTETEVIALGL PFGKVTNILMLKGKNQAFLE LATEEAAITMVNYYSVTPH LRNQPIYIQYSNHKELKTDN TLNQRAQAVLQAVTAVQTAN TPLSGTTVSESAVTPAQSPV LRRIIDNMYYPTLDVLHQI FSKFGAVLKITFTKNNQFQ ALLQYGDPVNAQQAKLALD



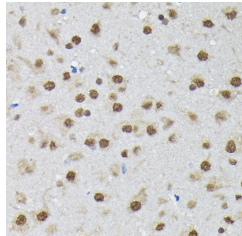
Immunohistochemistry analysis of paraffin-embedded mouse brain using PTBP2 Rabbit polyclonal antibody (STJ27848) at dilution of 1:100 (40x lens). Perform high pressure antigen retrieval with 10 mM citrate buffer pH 6.0 before commencing with immunohistochemistry staining protocol.



Immunohistochemistry analysis of paraffin-embedded mouse testis using PTBP2 Rabbit polyclonal antibody (STJ27848) at dilution of 1:100 (40x lens). Perform high pressure antigen retrieval with 10 mM citrate buffer pH 6.0 before commencing with immunohistochemistry staining protocol.



Immunohistochemistry analysis of paraffin-embedded human brain using PTBP2 Rabbit polyclonal antibody (STJ27848) at dilution of 1:100 (40x lens). Perform high pressure antigen retrieval with 10 mM citrate buffer pH 6.0 before commencing with immunohistochemistry staining protocol.



Immunohistochemistry analysis of paraffin-embedded rat brain using PTBP2 Rabbit polyclonal antibody (STJ27848) at dilution of 1:100 (40x lens). Perform high pressure antigen retrieval with 10 mM citrate buffer pH 6.0 before commencing with immunohistochemistry staining protocol.

This product is suitable for in-vitro studies under the RESEARCH USE ONLY [RUO] licence. This product must not be used as for diagnostic or other medical purposes.  
St John's Laboratory Ltd, Knowledge Dock Business Centre, University Way, London, E16 2RD | Tel: 0208 223 3081