

Anti-EIF3D antibody (1-240) (STJ27743)
STJ27743

GENERAL INFORMATION

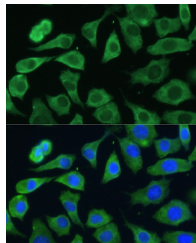
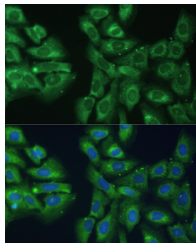
Product Type	Primary antibodies
Short Description	
Applications	WB/IF/ICC/ELISA
Host/Source	Rabbit
Reactivity	Human/Mouse/Rat

PRODUCT PROPERTIES

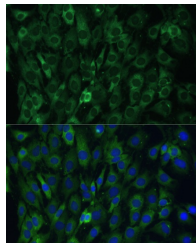
Clonality	Polyclonal
Clone ID	
Concentration	Lot specific
Conjugation	Unconjugated
Purification	Affinity purification
Dilution	WB:1:200-1:2000
Range	IF/CC:1:50-1:200
	ELISA:Recommended starting concentration is 1 μ g/mL. Please optimize the concentration based on your specific assay requirements.
Formulation	PBS with 0.01% Thimerosal, 50% Glycerol, pH 7.3.
Isotype	IgG
Storage Instruction	Store at -20°C for up to 1 year from the date of receipt, and avoid repeat freeze-thaw cycles.

TARGET INFORMATION

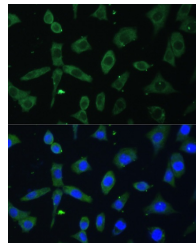
Gene ID	8664
Gene Symbol	EIF3D
Uniprot ID	EIF3D_HUMAN
Immunogen	
Immunogen Region	1-240
Specificity	Recombinant fusion protein containing a sequence corresponding to amino acids 1-240 of human EIF3D (NP_003744.1).
Immunogen Sequence	MAKFMTPTVIQDNPSGWGPCA VPEQFRDMPYQPFSGDRLG KVADWTGATYQDKRYTNKYS SQFGGGSQYAYFHEEDESFF QLVDTARTQKTAYQRNRMRF AQRNLRRDKDRRNMLQFNLQ ILPKSAKQKERERIRLQKKF QKQFGVRQKWDQKSQKPRDS SVEVRSDWEVKEEMDFPQLM KMRYLEVSEPDIECCGALE YYDKAFDRITRSEKPLRSI KRIFHTVTITDDPVIRKLA



Immunofluorescence analysis of U-2 OS cells using EIF3D Rabbit polyclonal antibody (STJ27743) at dilution of 1:100. Secondary antibody: Cy3 Goat Anti-Rabbit IgG (H+L) at 1:500 dilution. Blue: DAPI for nuclear staining.



Immunofluorescence analysis of C6 cells using EIF3D Rabbit polyclonal antibody (STJ27743) at dilution of 1:100. Secondary antibody: Cy3 Goat Anti-Rabbit IgG (H+L) at 1:500 dilution. Blue: DAPI for nuclear staining.



Immunofluorescence analysis of L-929 cells using EIF3D Rabbit polyclonal antibody (STJ27743) at dilution of 1:100. Secondary antibody: Cy3 Goat Anti-Rabbit IgG (H+L) at 1:500 dilution. Blue: DAPI for nuclear staining.

This product is suitable for in-vitro studies under the RESEARCH USE ONLY [RUO] licence. This product must not be used as for diagnostic or other medical purposes.
St John's Laboratory Ltd, Knowledge Dock Business Centre, University Way, London, E16 2RD | Tel: 0208 223 3081