

## Anti-CSDE1 antibody (369-600) (STJ27737)

STJ27737

### GENERAL INFORMATION

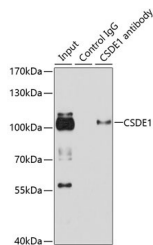
<b>Product Type</b>	Primary antibodies
<b>Short Description</b>	
<b>Applications</b>	WB/IF/ICC/IP/ELISA
<b>Host/Source</b>	Rabbit
<b>Reactivity</b>	Human/Mouse

### PRODUCT PROPERTIES

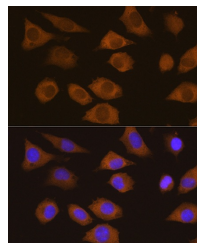
<b>Clonality</b>	Polyclonal
<b>Clone ID</b>	
<b>Concentration</b>	Lot specific
<b>Conjugation</b>	Unconjugated
<b>Purification</b>	Affinity purification
<b>Dilution Range</b>	WB:1:500-1:1000 IF/ICC:1:50-1:200
<b>Formulation</b>	IP:0.5 Mu g-4 Mu g antibody for 200 Mu g-400 Mu g extracts of whole cells ELISA:Recommended starting concentration is 1 Mu g/mL. Please optimize the concentration based on your specific assay requirements
<b>Isotype</b>	IgG
<b>Storage Instruction</b>	PBS with 0.02% Sodium Azide, 50% Glycerol, pH 7.3. Store at -20°C for up to 1 year from the date of receipt, and avoid repeat freeze-thaw cycles.

### TARGET INFORMATION

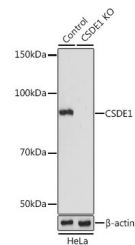
<b>Gene ID</b>	7812
<b>Gene Symbol</b>	CSDE1
<b>Uniprot ID</b>	CSDE1_HUMAN
<b>Immunogen</b>	
<b>Region</b>	369-600
<b>Specificity</b>	Recombinant fusion protein containing a sequence corresponding to amino acids 369-600 of human CSDE1 (NP_009089.4).
<b>Immunogen Sequence</b>	LSAQRNHAIKIKLPKGTVS FHSKSDHRLGTVEKEATFS NPKTTSPNKGKEKEAEDGII AYDDCGVKLTIAFQAKDVEG STSPQIGDKVEFSISDKQRP GQQVATCVRLGRNSNSKRL LGYVATLKDNGFIETANHD KEIFFHYSEFSGDVSLELG DMVEYSLSKGKGNKVSAREV NKTHSVNGITEEADPTIYSG KVIRPLRSVDPTQTTEYQGMII EIVEEGDMKGEV



Immunoprecipitation analysis of 100 Mu g extracts of HeLa cells using 3 Mu g CSDE1 antibody (STJ27737). Western blot was performed from the immunoprecipitate using CSDE1 antibody (STJ27737) at a dilution of 1:1000.



Immunofluorescence analysis of L929 cells using CSDE1 Rabbit polyclonal antibody (STJ27737) at dilution of 1:100. Secondary antibody: Cy3 Goat Anti-Rabbit IgG (H+L) at 1:500 dilution. Blue: DAPI for nuclear staining.



Western blot analysis of lysates from wild type (WT) and CSDE1 knockout (KO) HeLa cells, using [KO Validated] CSDE1 Rabbit polyclonal antibody (STJ27737) at 1:1000 dilution. Secondary antibody: HRP Goat Anti-Rabbit IgG (H+L) (STJ5000856) at 1:10000 dilution. Lysates/proteins: 25 Mu g per lane. Blocking buffer: 3% nonfat dry milk in TBST. Detection: ECL Basic Kit. Exposure time: 15s.

This product is suitable for in-vitro studies under the RESEARCH USE ONLY [RUO] licence. This product must not be used as for diagnostic or other medical purposes.  
St John's Laboratory Ltd, Knowledge Dock Business Centre, University Way, London, E16 2RD | Tel: 0208 223 3081