

Anti-ATP7B antibody (1251-1354) (STJ27643)
STJ27643

GENERAL INFORMATION

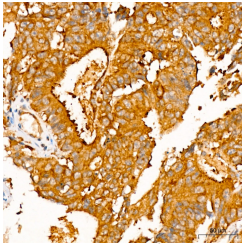
Product Type	Primary antibodies
Short Description	
Applications	WB/IHC-P/ELISA
Host/Source	Rabbit
Reactivity	Human/Mouse/Rat

PRODUCT PROPERTIES

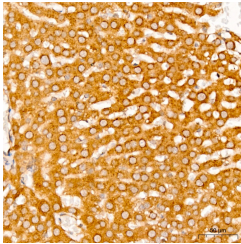
Clonality	Polyclonal
Clone ID	
Concentration	Lot specific
Conjugation	Unconjugated
Purification	Affinity purification
Dilution Range	WB:1:1000-1:2000 IHC-P:1:50-1:200 ELISA:Recommended starting concentration is 1 µg/mL. Please optimize the concentration based on your specific assay requirements.
Formulation	PBS with 0.05% Proclin300, 50% Glycerol, pH 7.3.
Isotype	IgG
Storage	Store at -20°C for up to 1 year from the date of receipt, and avoid repeat freeze-thaw cycles.
Instruction	

TARGET INFORMATION

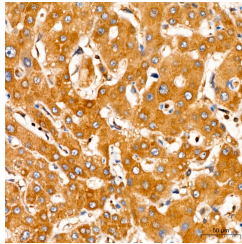
Gene ID	540
Gene Symbol	ATP7B
Uniprot ID	ATP7B_HUMAN
Immunogen	
Immunogen Region	1251-1354
Specificity	Recombinant fusion protein containing a sequence corresponding to amino acids 1251-1351 of human ATP7B (NP_001230111.1).
Immunogen Sequence	SSVSVLSSLQKCYKKPDL ERYEAQAHGHMKPLTASQVS VHIGMDDRWRDSPRATPWDQ VSYVSQVLSLSTSDKPSRH SAAADDGDKWSLLNGRDE E



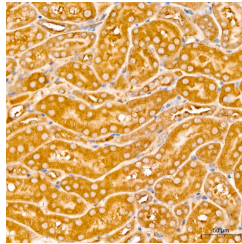
Immunohistochemistry analysis of ATP7B in paraffin-embedded human colon carcinoma tissue using ATP7B Rabbit polyclonal antibody (STJ27643) at a dilution of 1:100 (40x lens). High pressure antigen retrieval was performed with 0.01 M citrate buffer (pH 6.0) prior to immunohistochemistry staining.



Immunohistochemistry analysis of ATP7B in paraffin-embedded rat liver tissue using ATP7B Rabbit polyclonal antibody (STJ27643) at a dilution of 1:100 (40x lens). High pressure antigen retrieval was performed with 0.01 M citrate buffer (pH 6.0) prior to immunohistochemistry staining.



Immunohistochemistry analysis of ATP7B in paraffin-embedded human liver tissue using ATP7B Rabbit polyclonal antibody (STJ27643) at a dilution of 1:100 (40x lens). High pressure antigen retrieval was performed with 0.01 M citrate buffer (pH 6.0) prior to immunohistochemistry staining.



Immunohistochemistry analysis of ATP7B in paraffin-embedded mouse kidney tissue using ATP7B Rabbit polyclonal antibody (STJ27643) at a dilution of 1:100 (40x lens). High pressure antigen retrieval was performed with 0.01 M citrate buffer (pH 6.0) prior to immunohistochemistry staining.

This product is suitable for in-vitro studies under the RESEARCH USE ONLY [RUO] licence. This product must not be used as for diagnostic or other medical purposes.
St John's Laboratory Ltd, Knowledge Dock Business Centre, University Way, London, E16 2RD | Tel: 0208 223 3081