

Anti-MME antibody (52-352) (STJ27631)
STJ27631

GENERAL INFORMATION

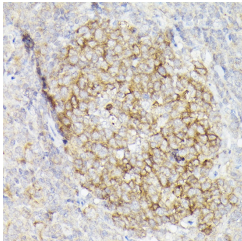
Product Type	Primary antibodies
Short Description	
Applications	WB/IHC-P/ELISA
Host/Source	Rabbit
Reactivity	Human/Mouse/Rat

PRODUCT PROPERTIES

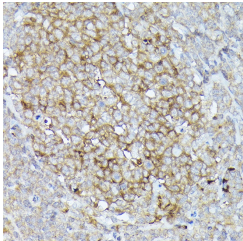
Clonality	Polyclonal
Clone ID	
Concentration	Lot specific
Conjugation	Unconjugated
Purification	Affinity purification
Dilution	WB:1:100-1:500
Range	IHC-P:1:50-1:200 ELISA:Recommended starting concentration is 1 μ g/mL. Please optimize the concentration based on your specific assay requirements.
Formulation	PBS with 0.02% Sodium Azide, 50% Glycerol, pH 7.3.
Isotype	IgG
Storage Instruction	Store at -20°C for up to 1 year from the date of receipt, and avoid repeat freeze-thaw cycles.

TARGET INFORMATION

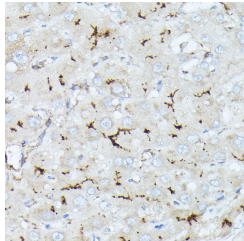
Gene ID	4311
Gene Symbol	MME
Uniprot ID	NEP_HUMAN
Immunogen	
Immunogen Region	52-352
Specificity	Recombinant fusion protein containing a sequence corresponding to amino acids 52-352 of human CD10/MME (NP_000893.2).
Immunogen Sequence	YDDGICKSSDCIKSAARLIQ NMDATTEPCTDFFKYACGGW LKRNVIPETSSRYGNFDILR DELEVVLKDLQEPKTEDIV AVQKAKALYRSCINESAIDS RGGEPLLLKLLPDIYGWPVAT ENWEQKYGASWTAEKAIQQL NSKYGKKVLINLFVGTDDKN SVNHHVIDQPRLLGPSRDY YECTGIYKEACTAYVDFMIS VARLIRQEERLPIDENQLAL EMNKVMELEKEIANATAKP



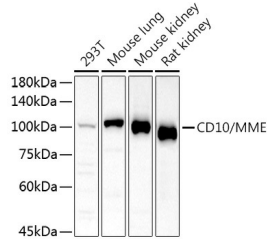
Immunohistochemistry analysis of CD10/MME in paraffin-embedded human tonsil tissue using Anti-CD10/MME Rabbit polyclonal antibody (STJ27631) at a dilution of 1:50 (40x lens). High pressure antigen retrieval was performed with 0.01 M citrate buffer (pH 6.0) prior to immunohistochemistry staining.



Immunohistochemistry analysis of CD10/MME in paraffin-embedded human tonsil using Anti-CD10/MME Rabbit polyclonal antibody (STJ27631) at a dilution of 1:50 (40x lens). Perform high pressure antigen retrieval with 10 mM citrate buffer pH 6.0 before commencing with immunohistochemistry staining protocol.



Immunohistochemistry analysis of CD10/MME in paraffin-embedded human liver using Anti-CD10/MME Rabbit polyclonal antibody (STJ27631) at a dilution of 1:50 (40x lens). Perform high pressure antigen retrieval with 10 mM citrate buffer pH 6.0 before commencing with immunohistochemistry staining protocol.



Western blot analysis of various lysates using Anti-CD10/MME Rabbit polyclonal antibody (STJ27631) at 1:500 dilution. Secondary antibody: HRP Goat Anti-Rabbit IgG (H+L) (STJ5000850) at 1:10000 dilution. Lysates/proteins: 25 μ g per lane. Blocking buffer: 3% nonfat dry milk in TBST. Detection: ECL Basic Kit. Exposure time: 180s.

This product is suitable for in-vitro studies under the RESEARCH USE ONLY [RUO] licence. This product must not be used as for diagnostic or other medical purposes.
St John's Laboratory Ltd, Knowledge Dock Business Centre, University Way, London, E16 2RD | Tel: 0208 223 3081