

Anti-NLRP3 antibody (43-1036) (STJ27619)

STJ27619

GENERAL INFORMATION

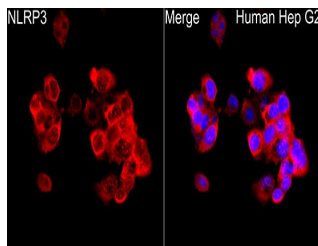
Product Type	Primary antibodies
Short Description	
Applications	WB/IF/ICC/ELISA
Host/Source	Rabbit
Reactivity	Human/Mouse/Rat

PRODUCT PROPERTIES

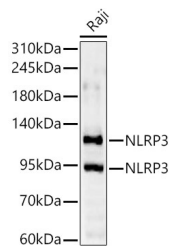
Clonality	Polyclonal
Clone ID	
Concentration	Lot specific
Conjugation	Unconjugated
Purification	Affinity purification
Dilution Range	WB:1:1000-1:5000 IF/ICC:1:50-1:200 ELISA:Recommended starting concentration is 1 Mu g/mL. Please optimize the concentration based on your specific assay requirements.
Formulation	PBS with 0.09% Sodium Azide, 50% Glycerol, pH 7.3.
Isotype	IgG
Storage Instruction	Store at -20°C for up to 1 year from the date of receipt, and avoid repeat freeze-thaw cycles.

TARGET INFORMATION

Gene ID	114548
Gene Symbol	NLRP3
Uniprot ID	NLRP3_HUMAN
Immunogen	
Immunogen Region	43-1036
Specificity	Recombinant fusion protein containing a sequence corresponding to amino acids 1-93 of mouse NLRP3 (NP_665826.1).
Immunogen Sequence	MTSVRCKLAQYLEDLVDL KKFMMHLEDYPPEKGCIPVP RGQMEKADHLDLATLMIDFN GEEKAWAMAVWIFAANRRD LWEKAKKDQPEWN



Immunofluorescence analysis of HepG2 cells using NLRP3 Rabbit polyclonal antibody (STJ27619) at dilution of 1:200 (40x lens). Secondary antibody: Cy3 Goat Anti-Rabbit IgG (H+L) at 1:500 dilution. Blue: DAPI for nuclear staining.



Western blot analysis of lysates from Raji cells using NLRP3 Rabbit polyclonal antibody (STJ27619) at 1:2000 dilution. Secondary antibody:HRP-Goat Anti-Rabbit IgG (H+L) (STJ500856) at 1:10000 dilution. Lysates/proteins: 25Å Mu g per lane. Blocking buffer: 3% nonfat dry milk in TBST. Detection:ECL Basic Kit. Exposure time:90s.

This product is suitable for in-vitro studies under the RESEARCH USE ONLY [RUO] licence. This product must not be used as for diagnostic or other medical purposes.
St John's Laboratory Ltd, Knowledge Dock Business Centre, University Way, London, E16 2RD | Tel: 0208 223 3081