

Anti-CPB2 antibody (115-365) (STJ27601)

STJ27601

GENERAL INFORMATION

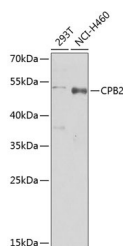
| | |
|--------------------------|--------------------|
| Product Type | Primary antibodies |
| Short Description | |
| Applications | WB/ELISA |
| Host/Source | Rabbit |
| Reactivity | Human |

PRODUCT PROPERTIES

| | |
|----------------------|--|
| Clonality | Polyclonal |
| Clone ID | |
| Concentration | Lot specific |
| Conjugation | Unconjugated |
| Purification | Affinity purification |
| Dilution | WB: 1:500-1:2000 |
| Range | ELISA: Recommended starting concentration is 1 µg/mL. Please optimize the concentration based on your specific assay requirements. |
| Formulation | PBS with 0.02% Sodium Azide, 50% Glycerol, pH 7.3. |
| Isotype | IgG |
| Storage | Store at -20°C for up to 1 year from the date of receipt, and avoid repeat freeze-thaw cycles. |
| Instruction | |

TARGET INFORMATION

| | |
|---------------------------|---|
| Gene ID | 1361 |
| Gene Symbol | CPB2 |
| Uniprot ID | CBPB2_HUMAN |
| Immunogen | |
| Immunogen Region | 115-365 |
| Specificity | Recombinant fusion protein containing a sequence corresponding to amino acids 115-365 of human CPB2 (NP_001863.2). |
| Immunogen Sequence | ASASYEQYHSLNEIYSWIE FITERHPDMLTKIHIGSSF KYPLYVLKVGKEQAAKNAI WIDCGIHAREWISPAFCLWF IGHITQFYGIIGQYTNLLRL VDFYVMPVNVNDGYDYSWKK NRMWRKNRSFYANNHCIGTD LNRNFASKHWCEEGASSSSC SETYCGLYPESEPEVKAVAS FLRRNINQIKAYISMHSYSQ HIVFPYSYTRSKSKDHEELS LVASEAVRAIEKTSKNTRY |



Western blot analysis of extracts of various cell lines, using CPB2 Antibody (STJ27601) at 1:1000 dilution. Secondary antibody: HRP Goat Anti-rabbit IgG (H+L) at 1:10000 dilution. Lysates/proteins: 25µg per lane. Blocking buffer: 3% nonfat dry milk in TBST. Detection: ECL Enhanced Kit. Exposure time: 30s.

This product is suitable for in-vitro studies under the RESEARCH USE ONLY [RUO] licence. This product must not be used as for diagnostic or other medical purposes.
St John's Laboratory Ltd, Knowledge Dock Business Centre, University Way, London, E16 2RD | Tel: 0208 223 3081