

Anti-SNAI1 antibody (C-Term) (STJ27533)

STJ27533

GENERAL INFORMATION

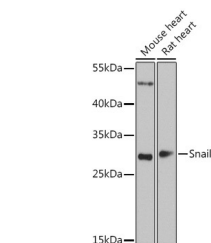
Product Type	Primary antibodies
Short Description	
Applications	WB/IHC-P/IF/ICC/ELISA
Host/Source	Rabbit
Reactivity	Human/Mouse/Rat

PRODUCT PROPERTIES

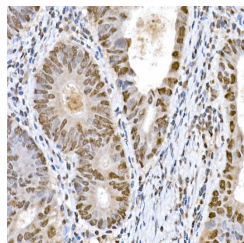
Clonality	Polyclonal
Clone ID	
Concentration	Lot specific
Conjugation	Unconjugated
Purification	Affinity purification
Dilution	WB:1:500-1:2000
Range	IHC-P:1:50-1:100 IF/ICC:1:50-1:100 ELISA:Recommended starting concentration is 1 μ g/mL. Please optimize the concentration based on your specific assay requirements.
Formulation	PBS with 0.05% Proclin300, 50% Glycerol, pH 7.3.
Isotype	IgG
Storage	Store at -20°C for up to 1 year from the date of receipt, and avoid repeat freeze-thaw cycles.
Instruction	

TARGET INFORMATION

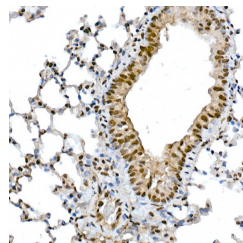
Gene ID	6615
Gene Symbol	SNAI1
Uniprot ID	SNAI1_HUMAN
Immunogen	
Region	C-Term
Specificity	Recombinant fusion protein containing a sequence corresponding to amino acids 1-264 of human Snail (NP_005976.2).
Immunogen Sequence	MPRSFLVRKPSDPNRKPNYS ELQDSNPEFTFQQPYDQAH LAAIPPPPEILNPTASLPMLI WDSVLAPQAQPIAWASLR LQ ESPRVAELTSLSDSDSGKGS QPPSPSPAPSSFSSTSVSS LEAEAYAAFPLGQVPKQLA QLSEAKDLQARKAFNCKYCN KEYLSLGALKMHIRSH TLPC VCGTCGKAFSRPWLLQGHVR THTGEKPFSCPHCSRAFAADR SNLRAHLQTHSDVKKYQQC



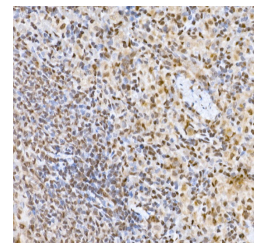
Western blot analysis of extracts of various cell lines, using Snail antibody (STJ27533) at 1:1000 dilution. Secondary antibody: HRP Goat Anti-rabbit IgG (H+L) (STJ5000856) at 1:10000 dilution. Lysates/proteins: 25 μ g per lane. Blocking buffer: 3% non-fat dry milk in TBST. Detection: ECL Basic kit. Exposure time: 90s.



Immunohistochemistry analysis of paraffin-embedded human colon carcinoma using Snail rabbit polyclonal antibody (STJ27533) at dilution of 1:150 (40x lens). Perform high pressure antigen retrieval with 10 mM citrate buffer pH 6.0 before commencing with immunohistochemistry staining protocol.



Immunohistochemistry analysis of paraffin-embedded mouse lung using Snail rabbit polyclonal antibody (STJ27533) at dilution of 1:150 (40x lens). Perform high pressure antigen retrieval with 10 mM citrate buffer pH 6.0 before commencing with immunohistochemistry staining protocol.



Immunohistochemistry analysis of paraffin-embedded rat spleen using Snail rabbit polyclonal antibody (STJ27533) at dilution of 1:150 (40x lens). Perform high pressure antigen retrieval with 10 mM citrate buffer pH 6.0 before commencing with immunohistochemistry staining protocol.

This product is suitable for in-vitro studies under the RESEARCH USE ONLY [RUO] licence. This product must not be used as for diagnostic or other medical purposes.

St John's Laboratory Ltd, Knowledge Dock Business Centre, University Way, London, E16 2RD | Tel: 0208 223 3081