

Anti-SH2B1 antibody (360-520) (STJ27510)

STJ27510

GENERAL INFORMATION

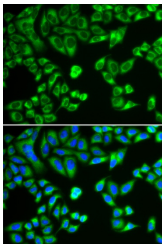
Product Type	Primary antibodies
Short Description	
Applications	IHC-P/IF/ICC/ELISA
Host/Source	Rabbit
Reactivity	Human/Mouse/Rat

PRODUCT PROPERTIES

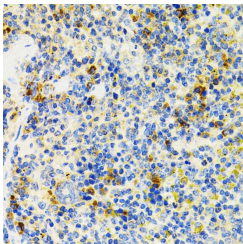
Clonality	Polyclonal
Clone ID	
Concentration	Lot specific
Conjugation	Unconjugated
Purification	Affinity purification
Dilution	IHC-P:1:50-1:200
Range	IF/ICC:1:20-1:50
	ELISA:Recommended starting concentration is 1 μ g/mL. Please optimize the concentration based on your specific assay requirements.
Formulation	PBS with 0.02% Sodium Azide, 50% Glycerol, pH 7.3.
Isotype	IgG
Storage Instruction	Store at -20°C for up to 1 year from the date of receipt, and avoid repeat freeze-thaw cycles.

TARGET INFORMATION

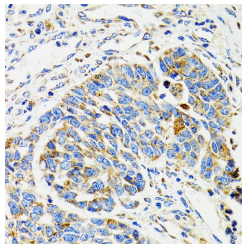
Gene ID	25970
Gene Symbol	SH2B1
Uniprot ID	SH2B1_HUMAN
Immunogen	
Immunogen Region	360-520
Specificity	Recombinant fusion protein containing a sequence corresponding to amino acids 360-520 of human SH2B1 (NP_056318.2).
Immunogen Sequence	DAQHVKAWSDIQECLSPGP CPATSPRPMTLPLAPGTSFL TRENTDSLELSCLNHSESLP SQDLLLGPSESNDRLSQGAY GGLSDRPSASISPSSASIAA SHFDSMELLPELPPRIPIE EGPTGTGVHPLSAPYPPLDT PETATGSFLFQGEPEGGEDG Q



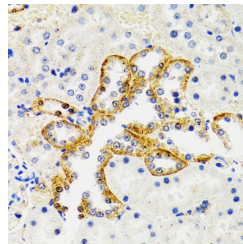
Immunofluorescence analysis of HeLa cells using SH2B1 antibody (STJ27510). Blue: DAPI for nuclear staining.



Immunohistochemistry analysis of paraffin-embedded mouse spleen using SH2B1 Antibody (STJ27510) at dilution of 1:100 (40x lens). Perform microwave antigen retrieval with 10 mM PBS buffer pH 7. 2 before commencing with immunohistochemistry staining protocol.



Immunohistochemistry analysis of paraffin-embedded human esophageal cancer using SH2B1 Antibody (STJ27510) at dilution of 1:100 (40x lens). Perform microwave antigen retrieval with 10 mM PBS buffer pH 7. 2 before commencing with immunohistochemistry staining protocol.



Immunohistochemistry analysis of paraffin-embedded rat kidney using SH2B1 Antibody (STJ27510) at dilution of 1:100 (40x lens). Perform microwave antigen retrieval with 10 mM PBS buffer pH 7. 2 before commencing with immunohistochemistry staining protocol.

This product is suitable for in-vitro studies under the RESEARCH USE ONLY [RUO] licence. This product must not be used as for diagnostic or other medical purposes.
St John's Laboratory Ltd, Knowledge Dock Business Centre, University Way, London, E16 2RD | Tel: 0208 223 3081