

Anti-NRF1 antibody (240-449) (STJ27493)

STJ27493

GENERAL INFORMATION

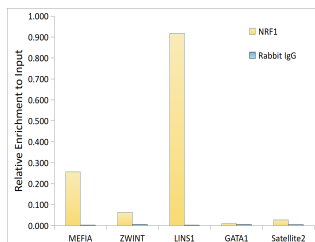
Product Type	Primary antibodies
Short Description	
Applications	WB/ELISA/ChIP
Host/Source	Rabbit
Reactivity	Human/Mouse/Rat

PRODUCT PROPERTIES

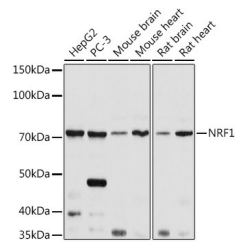
Clonality	Polyclonal
Clone ID	
Concentration	Lot specific
Conjugation	Unconjugated
Purification	Affinity purification
Dilution	WB:1:500-1:1000
Range	ELISA:Recommended starting concentration is 1 Mu g/mL. Please optimize the concentration based on your specific assay requirements.
Formulation	ChIP:5 Mu g antibody for 10 Mu g-15 Mu g of Chromatin
Isotype	PBS with 0.02% Sodium Azide, 50% Glycerol, pH 7.3.
Storage	IgG
Instruction	Store at -20°C for up to 1 year from the date of receipt, and avoid repeat freeze-thaw cycles.

TARGET INFORMATION

Gene ID	4899
Gene Symbol	NRF1
Uniprot ID	NRF1_HUMAN
Immunogen	
Immunogen Region	240-449
Specificity	Recombinant fusion protein containing a sequence corresponding to amino acids 240-449 of human NRF1 (NP_001035199.1).
Immunogen Sequence	WANVRSDVTRTEEQKQVRSWT QALRTIVKNCYKQHGREDLL YAFEDQQTQTQATATHSIAH LVPSQTVWQTFSNPDGTVSL IQVGTGATVATLADASELPT TVTVAQVNYSAVADGEVEQN WATLQGGEMTIQTQASEAT QAVASLAEAAVAASQEMQQG ATVTMALNSEAAAHAVATLA EATLQGGGQIVLSGETAAAV GALTGVQDAN



Chromatin immunoprecipitation analysis of extracts of HepG2 cells, using NRF1 antibody (STJ27493) and rabbit IgG. The amount of immunoprecipitated DNA was checked by quantitative PCR. Histogram was constructed by the ratios of the immunoprecipitated DNA to the input.



Western blot analysis of various lysates using NRF1 Rabbit polyclonal antibody (STJ27493) at 1:1000 dilution. Secondary antibody: HRP Goat Anti-Rabbit IgG (H+L) (STJ5000856) at 1:10000 dilution. Lysates/proteins: 25 Mu g per lane. Blocking buffer: 3% nonfat dry milk in TBST. Detection: ECL Basic Kit. Exposure time: 5s.

This product is suitable for in-vitro studies under the RESEARCH USE ONLY [RUO] licence. This product must not be used as for diagnostic or other medical purposes.

St John's Laboratory Ltd, Knowledge Dock Business Centre, University Way, London, E16 2RD | Tel: 0208 223 3081