

Anti-S100A11 antibody (1-105) (STJ27439)

STJ27439

GENERAL INFORMATION

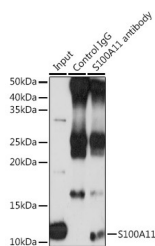
Product Type	Primary antibodies
Short Description	
Applications	WB/IF/ICC/IP/ELISA
Host/Source	Rabbit
Reactivity	Human

PRODUCT PROPERTIES

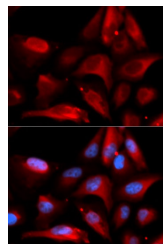
Clonality	Polyclonal
Clone ID	
Concentration	Lot specific
Conjugation	Unconjugated
Purification	Affinity purification
Dilution Range	WB:1:500-1:2000 IF/CC:1:50-1:200 IP:0.5 Mu g-4 Mu g antibody for 200 Mu g-400 Mu g extracts of whole cells ELISA:Recommended starting concentration is 1 Mu g/mL. Please optimize the concentration based on your specific assay requirements
Formulation	PBS with 0.02% Sodium Azide, 50% Glycerol, pH 7.3.
Isotype	IgG
Storage	Store at -20°C for up to 1 year from the date of receipt, and avoid repeat freeze-thaw cycles.
Instruction	

TARGET INFORMATION

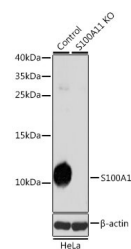
Gene ID	6282
Gene Symbol	S100A11
Uniprot ID	S10AB_HUMAN
Immunogen	
Immunogen Region	1-105
Specificity	Recombinant fusion protein containing a sequence corresponding to amino acids 1-105 of human S100A11 (NP_005611.1).
Immunogen Sequence	MAKISSPTETERCIESLIIV FQKYAGKDGYNLTLSKTEFL SFMNTLAAFTKNQKDPGVL DRMMKKLDTNSDGQLDFSEF LNLIGGLAMACHDSFLKAVP SQKRT



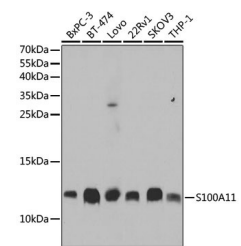
Immunoprecipitation analysis of 200 Mu g extracts of THP-1 cells using 3 Mu g S100A11 antibody (STJ27439). Western blot was performed from the immunoprecipitate using S100A11 antibody (STJ27439) at a dilution of 1:1000.



Immunofluorescence analysis of U2OS cells using [KO Validated] S100A11 Rabbit polyclonal antibody (STJ27439). Secondary antibody: Cy3 Goat Anti-Rabbit IgG (H+L) at 1:500 dilution. Blue: DAPI for nuclear staining.



Western blot analysis of lysates from wild type (WT) and S100A11 knockout (KO) HeLa cells, using [KO Validated] S100A11 Rabbit polyclonal antibody (STJ27439) at 1:1000 dilution. Secondary antibody: HRP Goat Anti-Rabbit IgG (H+L) (STJS000856) at 1:10000 dilution. Lysates/proteins: 25 Mu g per lane. Blocking buffer: 3% nonfat dry milk in TBST. Detection: ECL Basic Kit. Exposure time: 10s.



Western blot analysis of various lysates using [KO Validated] S100A11 Rabbit polyclonal antibody (STJ27439) at 1:1000 dilution. Secondary antibody: HRP Goat Anti-Rabbit IgG (H+L) (STJS000856) at 1:10000 dilution. Lysates/proteins: 25 Mu g per lane. Blocking buffer: 3% nonfat dry milk in TBST. Detection: ECL Basic Kit. Exposure time: 10s.

This product is suitable for in-vitro studies under the RESEARCH USE ONLY [RUO] licence. This product must not be used as for diagnostic or other medical purposes.
St John's Laboratory Ltd, Knowledge Dock Business Centre, University Way, London, E16 2RD | Tel: 0208 223 3081