

Anti-MB antibody (1-154) (STJ27424)
STJ27424

GENERAL INFORMATION

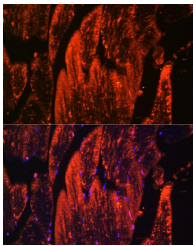
Product Type	Primary antibodies
Short Description	
Applications	WB/IF/ICC/ELISA
Host/Source	Rabbit
Reactivity	Human/Mouse/Rat

PRODUCT PROPERTIES

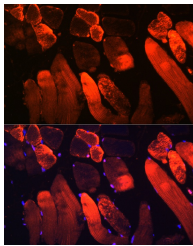
Clonality	Polyclonal
Clone ID	
Concentration	Lot specific
Conjugation	Unconjugated
Purification	Affinity purification
Dilution	WB: 1:500-1:1000
Range	IF/CC: 1:100-1:500 ELISA: Recommended starting concentration is 1 µg/mL. Please optimize the concentration based on your specific assay requirements.
Formulation	PBS with 0.02% Sodium Azide, 50% Glycerol, pH 7.3.
Isotype	IgG
Storage Instruction	Store at -20°C for up to 1 year from the date of receipt, and avoid repeat freeze-thaw cycles.

TARGET INFORMATION

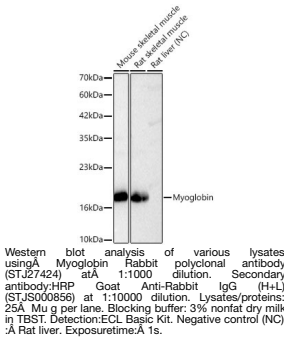
Gene ID	4151
Gene Symbol	MB
Uniprot ID	MYG_HUMAN
Immunogen	
Immunogen Region	1-154
Specificity	Recombinant fusion protein containing a sequence corresponding to amino acids 1-154 of human Myoglobin (NP_005359.1).
Immunogen Sequence	MGLSDGGEWQLVLNVWGKVEA DIPGHGQEVLRIRFKGHPET LEKFDKFKHLKSEDEMKASE DLKKHGATVLTALGGILKKK GHHEAEIKPLAQSHATKHKI PVKYLEFISECIQVLQSKH PGDFGADAQGAMNKALELFR KDMASNYKELGFQG



Immunofluorescence analysis of paraffin-embedded mouse skeletal muscle using Myoglobin Rabbit polyclonal antibody (STJ27424) at dilution of 1:300 (40x lens). Secondary antibody: Cy3 Goat Anti-Rabbit IgG (H+L) at 1:500 dilution. Blue: DAPI for nuclear staining.



Immunofluorescence analysis of paraffin-embedded rat skeletal muscle using Myoglobin Rabbit polyclonal antibody (STJ27424) at dilution of 1:300 (40x lens). Secondary antibody: Cy3 Goat Anti-Rabbit IgG (H+L) at 1:500 dilution. Blue: DAPI for nuclear staining.



This product is suitable for in-vitro studies under the RESEARCH USE ONLY [RUO] licence. This product must not be used as for diagnostic or other medical purposes.
St John's Laboratory Ltd, Knowledge Dock Business Centre, University Way, London, E16 2RD | Tel: 0208 223 3081