

Anti-LBR antibody (1-211) (STJ27421)

STJ27421

GENERAL INFORMATION

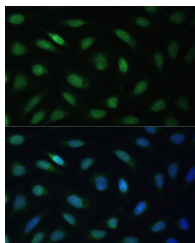
| | |
|--------------------------|--------------------|
| Product Type | Primary antibodies |
| Short Description | |
| Applications | WB/IF/ICC/ELISA |
| Host/Source | Rabbit |
| Reactivity | Human/Mouse/Rat |

PRODUCT PROPERTIES

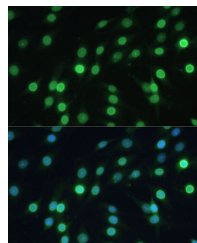
| | |
|----------------------------|--|
| Clonality | Polyclonal |
| Clone ID | |
| Concentration | Lot specific |
| Conjugation | Unconjugated |
| Purification | Affinity purification |
| Dilution | WB: 1:500-1:2000 |
| Range | IF/CC: 1:50-1:100 |
| | ELISA: Recommended starting concentration is 1 µg/mL. Please optimize the concentration based on your specific assay requirements. |
| Formulation | PBS with 0.02% Sodium Azide, 50% Glycerol, pH 7.3. |
| Isotype | IgG |
| Storage Instruction | Store at -20°C for up to 1 year from the date of receipt, and avoid repeat freeze-thaw cycles. |

TARGET INFORMATION

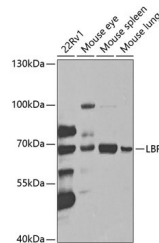
| | |
|---------------------------|--|
| Gene ID | 3930 |
| Gene Symbol | LBR |
| Uniprot ID | LBR_HUMAN |
| Immunogen | |
| Immunogen Region | 1-211 |
| Specificity | Recombinant fusion protein containing a sequence corresponding to amino acids 1-211 of human LBR (NP_002287.2). |
| Immunogen Sequence | MPSRKFDAGEVVRGRWPGSS LYYEVEILSHDSTSQLYTVK YKDGTELELKENDIKPLTSF RQRKGGSTSSSPSRRRGSR RSRSRSPGRPPKSARRSASA SHQADIKEARREVEVKLTPL ILKPFGNSISRYNGEPEHIE RNDAPHKNTQEFSLSQESS YIATQYSLRPRREEVKLEI DSKEEKYVAKELAVRTFEVT PIRAKDLEFGG |



Immunofluorescence analysis of U-2 OS cells using LBR Polyclonal Antibody (STJ27421) at dilution of 1:100 (40x lens). Blue: DAPI for nuclear staining.



Immunofluorescence analysis of C6 cells using LBR Polyclonal Antibody (STJ27421) at dilution of 1:100 (40x lens). Blue: DAPI for nuclear staining.



Western blot analysis of extracts of various cell lines, using LBR antibody (STJ27421) at 1:1000 dilution. Secondary antibody: HRP Goat Anti-Rabbit IgG (H+L) (STJ5000856) at 1:10000 dilution. Lysates/proteins: 25 µg per lane. Blocking buffer: 3% nonfat dry milk in TBST. Detection: ECL Enhanced Kit. Exposure time: 90s.

This product is suitable for in-vitro studies under the RESEARCH USE ONLY [RUO] licence. This product must not be used as for diagnostic or other medical purposes.

St John's Laboratory Ltd, Knowledge Dock Business Centre, University Way, London, E16 2RD | Tel: 0208 223 3081