

Anti-MGP antibody (20-103) (STJ27392)
STJ27392

GENERAL INFORMATION

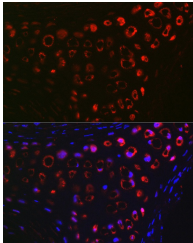
Product Type	Primary antibodies
Short Description	
Applications	WB/IHC-P/IF/ICC/ELISA
Host/Source	Rabbit
Reactivity	Human/Mouse/Rat

PRODUCT PROPERTIES

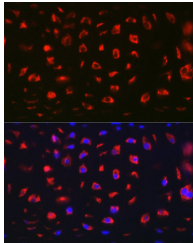
Clonality	Polyclonal
Clone ID	
Concentration	Lot specific
Conjugation	Unconjugated
Purification	Affinity purification
Dilution Range	WB:1:500-1:1000 IHC-P:1:50-1:200 IF/ICC:1:50-1:200 ELISA:Recommended starting concentration is 1 µg/mL. Please optimize the concentration based on your specific assay requirements.
Formulation	PBS with 0.05% Proclin300, 50% Glycerol, pH 7.3.
Isotype	IgG
Storage Instruction	Store at -20°C for up to 1 year from the date of receipt, and avoid repeat freeze-thaw cycles.

TARGET INFORMATION

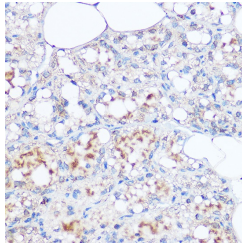
Gene ID	4256
Gene Symbol	MGP
Uniprot ID	MGP_HUMAN
Immunogen	
Immunogen Region	20-103
Specificity	Recombinant fusion protein containing a sequence corresponding to amino acids 20-103 of human MGP (NP_000891.2).
Immunogen Sequence	YESHESMESYELNPFINRRN ANTFISPQQRWRRAKVQERIR ERSKPVHELNREACDDYRLC ERYAMVYGYNAAYNRYFRKR RGTK



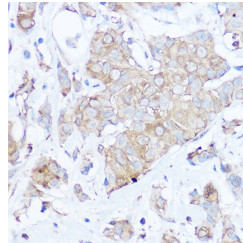
Immunofluorescence analysis of paraffin-embedded mouse cartilage using MGP Rabbit polyclonal antibody (STJ27392) at dilution of 1:100 (40x lens). Secondary antibody: Cy3 Goat Anti-Rabbit IgG (H+L) at 1:500 dilution. Blue: DAPI for nuclear staining.



Immunofluorescence analysis of paraffin-embedded rat cartilage using MGP Rabbit polyclonal antibody (STJ27392) at dilution of 1:100 (40x lens). Secondary antibody: Cy3 Goat Anti-Rabbit IgG (H+L) at 1:500 dilution. Blue: DAPI for nuclear staining.



Immunohistochemistry analysis of MGP in paraffin-embedded rat breast using MGP Rabbit polyclonal antibody (STJ27392) at dilution of 1:100 (40x lens). Perform high pressure antigen retrieval with 10 mM citrate buffer pH 6, 0 before commencing with immunohistochemistry staining protocol.



Immunohistochemistry analysis of MGP in paraffin-embedded human breast cancer using MGP Rabbit polyclonal antibody (STJ27392) at dilution of 1:100 (40x lens). Perform high pressure antigen retrieval with 10 mM citrate buffer pH 6, 0 before commencing with immunohistochemistry staining protocol.