

**Anti-STXBP1 antibody (295-594) (STJ27373)**  
STJ27373

**GENERAL INFORMATION**

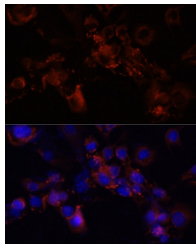
<b>Product Type</b>	Primary antibodies
<b>Short Description</b>	
<b>Applications</b>	IF/ICC/ELISA
<b>Host/Source</b>	Rabbit
<b>Reactivity</b>	Human/Rat

**PRODUCT PROPERTIES**

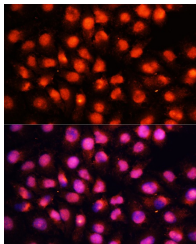
<b>Clonality</b>	Polyclonal
<b>Clone ID</b>	
<b>Concentration</b>	Lot specific
<b>Conjugation</b>	Unconjugated
<b>Purification</b>	Affinity purification
<b>Dilution</b>	IF/ICC:1:50-1:200
<b>Range</b>	ELISA:Recommended starting concentration is 1 $\mu$ g/mL. Please optimize the concentration based on your specific assay requirements.
<b>Formulation</b>	PBS with 0.02% Sodium Azide, 50% Glycerol, pH 7.3.
<b>Isotype</b>	IgG
<b>Storage Instruction</b>	Store at -20°C for up to 1 year from the date of receipt, and avoid repeat freeze-thaw cycles.

**TARGET INFORMATION**

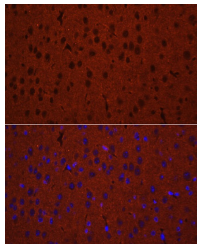
<b>Gene ID</b>	6812
<b>Gene Symbol</b>	STXBP1
<b>Uniprot ID</b>	STXB1_HUMAN
<b>Immunogen</b>	
<b>Immunogen Region</b>	295-594
<b>Specificity</b>	Recombinant fusion protein containing a sequence corresponding to amino acids 295-594 of human STXBP1 (NP_001027392.1).
<b>Immunogen Sequence</b>	HIAEVSQEVTRSLKDFSSSK RMNTGEKTTMRDLSQMLKKM PQYQKELSKYSTHLHLAEDC MKHYQGTVDKLCRVEQDLAM GTDAEGEKIKDPMRAIVPIL LDANVSTYDKIRIILLYIFL KNGITEENLNKLIQHAQIPP EDSEITNMAHLGVPVITDS TLRRRSKPERKERISEQTYQ LSRWTPIIKDIMEDTIEDKL DTKHYPYISTRSSASFSTTA VSARYGHWKHNKAPGEYRS



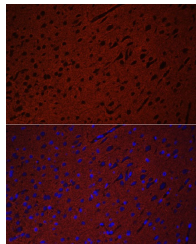
Immunofluorescence analysis of NIH/3T3 cells using STXBP1 antibody (STJ27373) at dilution of 1:100 (40x lens). Blue: DAPI for nuclear staining.



Immunofluorescence analysis of HeLa cells using STXBP1 antibody (STJ27373) at dilution of 1:100 (40x lens). Blue: DAPI for nuclear staining.



Immunofluorescence analysis of mouse brain using STXBP1 antibody (STJ27373) at dilution of 1:50. Blue: DAPI for nuclear staining.



Immunofluorescence analysis of rat brain using STXBP1 antibody (STJ27373) at dilution of 1:50. Blue: DAPI for nuclear staining.

This product is suitable for in-vitro studies under the RESEARCH USE ONLY [RUO] licence. This product must not be used as for diagnostic or other medical purposes.  
St John's Laboratory Ltd, Knowledge Dock Business Centre, University Way, London, E16 2RD | Tel: 0208 223 3081