

Anti-NPC2 antibody (20-151) (STJ27366)

STJ27366

GENERAL INFORMATION

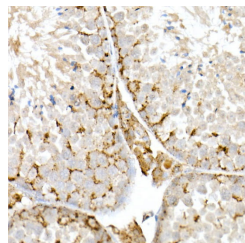
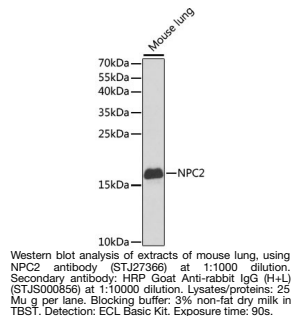
Product Type	Primary antibodies
Short Description	
Applications	WB/IHC-P/IF/ICC/ELISA
Host/Source	Rabbit
Reactivity	Human/Mouse/Rat

PRODUCT PROPERTIES

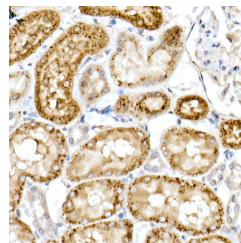
Clonality	Polyclonal
Clone ID	
Concentration	Lot specific
Conjugation	Unconjugated
Purification	Affinity purification
Dilution Range	WB:1:500-1:2000 IHC-P:1:50-1:200 IF/ICC:1:50-1:200 ELISA:Recommended starting concentration is 1 Mu g/mL. Please optimize the concentration based on your specific assay requirements.
Formulation	PBS with 0.09% Sodium Azide, 50% Glycerol, pH 7.3.
Isotype	IgG
Storage	Store at -20°C for up to 1 year from the date of receipt, and avoid repeat freeze-thaw cycles.
Instruction	

TARGET INFORMATION

Gene ID	10577
Gene Symbol	NPC2
Uniprot ID	NPC2_HUMAN
Immunogen	
Region	20-151
Specificity	Recombinant fusion protein containing a sequence corresponding to amino acids 20-151 of human NPC2 (NP_006423.1).
Immunogen Sequence	EPVQFKDCGSVDGVIKEVNV SPCPTQPCQLSKGQSYSVNV TFTSNIQSKSSKAVVHGILM GVPVPFPIPEPDGCKSGINC PIQDKTYSYLNKLPVKSEY PSIKLVVEWQLQDDKNQSLF CWEIPVQIVSHL



Immunohistochemistry analysis of paraffin-embedded mouse testis using NPC2 rabbit polyclonal antibody (STJ27366) at dilution of 1:50 (40x lens). Perform high pressure antigen retrieval with 10 mM citrate buffer pH 6.0 before commencing with immunohistochemistry staining protocol.



Immunohistochemistry analysis of paraffin-embedded rat kidney using NPC2 rabbit polyclonal antibody (STJ27366) at dilution of 1:50 (40x lens). Perform high pressure antigen retrieval with 10 mM citrate buffer pH 6.0 before commencing with immunohistochemistry staining protocol.

This product is suitable for in-vitro studies under the RESEARCH USE ONLY [RUO] licence. This product must not be used as for diagnostic or other medical purposes.

St John's Laboratory Ltd, Knowledge Dock Business Centre, University Way, London, E16 2RD | Tel: 0208 223 3081