

Anti-CFP antibody (190-469) (STJ27351)

STJ27351

GENERAL INFORMATION

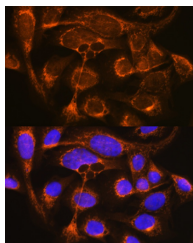
Product Type	Primary antibodies
Short Description	
Applications	WB/IHC-P/IF/ICC/ELISA
Host/Source	Rabbit
Reactivity	Human/Mouse/Rat

PRODUCT PROPERTIES

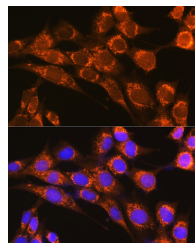
Clonality	Polyclonal
Clone ID	
Concentration	Lot specific
Conjugation	Unconjugated
Purification	Affinity purification
Dilution	WB:1:1000-1:5000
Range	IHC-P:1:50-1:200 IF/ICC:1:50-1:200 ELISA:Recommended starting concentration is 1 μ g/mL. Please optimize the concentration based on your specific assay requirements.
Formulation	PBS with 0.05% Proclin300, 50% Glycerol, pH 7.3.
Isotype	IgG
Storage	Store at -20°C for up to 1 year from the date of receipt, and avoid repeat freeze-thaw cycles.
Instruction	

TARGET INFORMATION

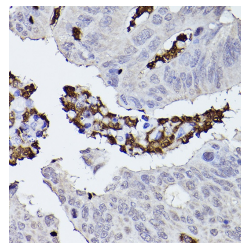
Gene ID	5199
Gene Symbol	CFP
Uniprot ID	PROP_HUMAN
Immunogen	
Immunogen Region	190-469
Specificity	Recombinant fusion protein containing a sequence corresponding to amino acids 190-469 of human CFP (NP_001138724.1).
Immunogen Sequence	CPHTGAWATWGPWTPCSASC HGGPHEPKETRSRKCSAPEP SQKPPGKPCPGLAYEQRRCT GLPPCPVAGGWGPWGPVSPC PVTGGLGQTMQRTCNHPVP QHGGPFCAGDATRTHICNTA VPCPVDGEWDSWGEWSPCIR RNMKSISCQEIPGQQSRGRT CRGRKFDGHRACAGQQQDIRH CYSIQHCPLKGSWSEWSTWG LCMPPCGPNPTRARQRLCTP LLPKYPTTVMVEGQGEKN



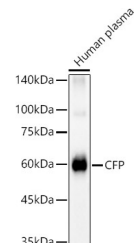
Immunofluorescence analysis of U-2 OS cells using CFP Rabbit polyclonal antibody (STJ27351) at dilution of 1:100 (40x lens). Blue: DAPI for nuclear staining.



Immunofluorescence analysis of NIH-3T3 cells using CFP Rabbit polyclonal antibody (STJ27351) at dilution of 1:100 (40x lens). Blue: DAPI for nuclear staining.



Immunohistochemistry analysis of paraffin-embedded human colon carcinoma using CFP Rabbit polyclonal antibody (STJ27351) at dilution of 1:50 (40x lens). Perform high pressure antigen retrieval with 10 mM citrate buffer pH 6, 0 before commencing with immunohistochemistry staining protocol.



Western blot analysis of Human plasma using CFP antibody (STJ27351) at 1:2000 dilution. Secondary antibody: HRP Goat Anti-Rabbit IgG (H+L) (STJ5000856) at 1:10000 dilution. Lysates/proteins: 25 μ g per lane. Blocking buffer: 3% nonfat dry milk in TBST. Detection: ECL Basic Kit. Exposure time: 30s.

This product is suitable for in-vitro studies under the RESEARCH USE ONLY [RUO] licence. This product must not be used as for diagnostic or other medical purposes.
St John's Laboratory Ltd, Knowledge Dock Business Centre, University Way, London, E16 2RD | Tel: 0208 223 3081