

# Anti-ADAM9 antibody (29-210) (STJ27341)

STJ27341

## GENERAL INFORMATION

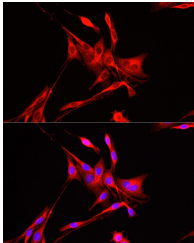
<b>Product Type</b>	Primary antibodies
<b>Short Description</b>	
<b>Applications</b>	WB/IF/ICC/ELISA
<b>Host/Source</b>	Rabbit
<b>Reactivity</b>	Human/Mouse/Rat/Monkey

## PRODUCT PROPERTIES

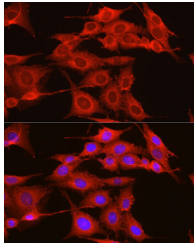
<b>Clonality</b>	Polyclonal
<b>Clone ID</b>	
<b>Concentration</b>	Lot specific
<b>Conjugation</b>	Unconjugated
<b>Purification</b>	Affinity purification
<b>Dilution</b>	WB: 1:500-1:1000
<b>Range</b>	IF/CC: 1:50-1:200
	ELISA: Recommended starting concentration is 1 µg/mL. Please optimize the concentration based on your specific assay requirements.
<b>Formulation</b>	PBS with 0.09% Sodium Azide, 50% Glycerol, pH 7.3.
<b>Isotype</b>	IgG
<b>Storage Instruction</b>	Store at -20°C for up to 1 year from the date of receipt, and avoid repeat freeze-thaw cycles.

## TARGET INFORMATION

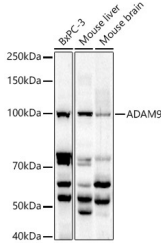
<b>Gene ID</b>	8754
<b>Gene Symbol</b>	ADAM9
<b>Uniprot ID</b>	ADAM9_HUMAN
<b>Immunogen</b>	
<b>Immunogen Region</b>	29-210
<b>Specificity</b>	Recombinant fusion protein containing a sequence corresponding to amino acids 29-210 of human ADAM9 (NP_003807.1).
<b>Immunogen Sequence</b>	AARPGFQQTSHLSSYEITP WRLTRERREAPRPYSKQVSY VQAEGKEHIIHLERNKDLL PEDFVVYTYNKEGTLTDHP NIQNHCHYRGYVEGVHNSI ALSDCFGLRGLLHLENASYG IEPLQNSSHFEHIYRMDDV YKEPLKCGVSNKDIEKETAK DEEEPPSMTQLRRRAVL PQ



Immunofluorescence analysis of PC-12 cells using ADAM9 Rabbit polyclonal antibody (STJ27341) at dilution of 1:50 (40x lens). Secondary antibody: Cy3 Goat Anti-Rabbit IgG (H+L) at 1:500 dilution. Blue: DAPI for nuclear staining.



Immunofluorescence analysis of NIH/3T3 cells using ADAM9 Rabbit polyclonal antibody (STJ27341) at dilution of 1:50 (40x lens). Secondary antibody: Cy3 Goat Anti-Rabbit IgG (H+L) at 1:500 dilution. Blue: DAPI for nuclear staining.



Western blot analysis of various lysates using ADAM9 Rabbit polyclonal antibody (STJ27341) at 1:1000 dilution. Secondary antibody: HRP Goat Anti-Rabbit IgG (H+L) (STJ500856) at 1:10000 dilution. Lysates/proteins: 25 µg per lane. Blocking buffer: 3% nonfat dry milk in TBST. Detection: ECL Basic Kit. Exposure time: 180s.

This product is suitable for in-vitro studies under the RESEARCH USE ONLY [RUO] licence. This product must not be used as for diagnostic or other medical purposes.  
St John's Laboratory Ltd, Knowledge Dock Business Centre, University Way, London, E16 2RD | Tel: 0208 223 3081