

Anti-LTBR antibody (336-435) (STJ27304)

STJ27304

GENERAL INFORMATION

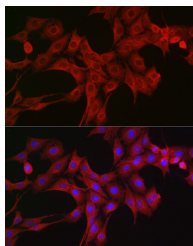
Product Type	Primary antibodies
Short Description	
Applications	WB/IHC-P/IF/ICC/ELISA
Host/Source	Rabbit
Reactivity	Human/Mouse/Rat

PRODUCT PROPERTIES

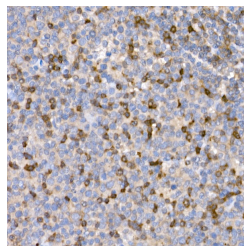
Clonality	Polyclonal
Clone ID	
Concentration	Lot specific
Conjugation	Unconjugated
Purification	Affinity purification
Dilution Range	WB:1:500-1:1000 IHC-P:1:50-1:200 IF/ICC:1:50-1:200 ELISA:Recommended starting concentration is 1 Mu g/mL. Please optimize the concentration based on your specific assay requirements.
Formulation	PBS with 0.05% Proclin300, 50% Glycerol, pH 7.3.
Isotype	IgG
Storage	Store at -20°C for up to 1 year from the date of receipt, and avoid repeat freeze-thaw cycles.
Instruction	

TARGET INFORMATION

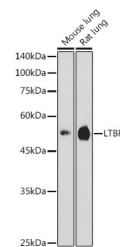
Gene ID	4055
Gene Symbol	LTBR
Uniprot ID	TNR3_HUMAN
Immunogen	
Immunogen Region	336-435
Specificity	A synthetic peptide corresponding to a sequence within amino acids 336-435 of human LTBR (NP_002333.1).
Immunogen Sequence	GEQSQVAHGVTNGIHVTGGSM TITGNIYINGPVLGGPPGP GDLPATPEPPYPIPEGDPG PPGLSTPHQEDGKAWHLAET EHC GATPSNRGPRNQFITHD



Immunofluorescence analysis of PC-12 cells using LTBR Rabbit polyclonal antibody (STJ27304) at dilution of 1:200 (40x lens). Secondary antibody: Cy3 Goat Anti-Rabbit IgG (H+L) at 1:500 dilution. Blue: DAPI for nuclear staining.



Immunohistochemistry analysis of LTBR in paraffin-embedded human tonsil using LTBR Rabbit polyclonal antibody (STJ27304) at dilution of 1:20 (40x lens). Perform high pressure antigen retrieval with 10 mM citrate buffer pH 6.0 before commencing with immunohistochemistry staining protocol.



Western blot analysis of various lysates using LTBR Rabbit polyclonal antibody (STJ27304) at 1:1000 dilution. Secondary antibody: HRP Goat Anti-Rabbit IgG (H+L) (STJ5000856) at 1:10000 dilution. Lysates/proteins: 25 Mu g per lane. Blocking buffer: 3% nonfat dry milk in TBST. Detection: ECL Enhanced Kit. Exposure time: 180s.

This product is suitable for in-vitro studies under the RESEARCH USE ONLY [RUO] licence. This product must not be used as for diagnostic or other medical purposes.
St John's Laboratory Ltd, Knowledge Dock Business Centre, University Way, London, E16 2RD | Tel: 0208 223 3081