

Anti-IMPDPH2 antibody (215-514) (STJ27303)

STJ27303

GENERAL INFORMATION

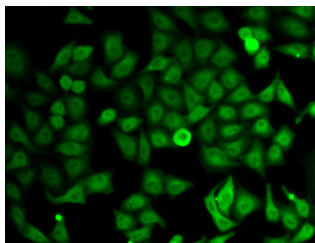
Product Type	Primary antibodies
Short Description	
Applications	WB/IF/ICC/ELISA
Host/Source	Rabbit
Reactivity	Human/Mouse/Rat

PRODUCT PROPERTIES

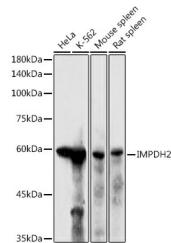
Clonality	Polyclonal
Clone ID	
Concentration	Lot specific
Conjugation	Unconjugated
Purification	Affinity purification
Dilution	WB:1:100-1:500
Range	IF/CC:1:50-1:200
	ELISA:Recommended starting concentration is 1 Mu g/mL. Please optimize the concentration based on your specific assay requirements.
Formulation	PBS with 0.05% Proclin300, 50% Glycerol, pH 7.3.
Isotype	IgG
Storage Instruction	Store at -20°C for up to 1 year from the date of receipt, and avoid repeat freeze-thaw cycles.

TARGET INFORMATION

Gene ID	3615
Gene Symbol	IMPDPH2
Uniprot ID	IMDH2_HUMAN
Immunogen	
Immunogen Region	215-514
Specificity	Recombinant fusion protein containing a sequence corresponding to amino acids 215-514 of human IMPDPH2 (NP_000875.2).
Immunogen Sequence	DDELVAIIARTDLKKNRDYP LASKDAKKQLLCGAAIGTHE DDKYRLDLLAQAGVDVVLD SSQGNISIFQINMIKYIKDKY PNLQVIGGNVVTAAQAKNLI DAGVDALRVGMGSGSICITQ EVLACGRPQATAVYKVSEYA RRFVGPVIADGGIQNVGHIA KALALGASTVMMGSLAATT EAPGEYFFSDGIRLKKYRGM GSLDAMDKHLSSQNRYFSEA DKIKVAQGVSGAVQDKGSI



Immunofluorescence analysis of HeLa cells using IMPDPH2 antibody (STJ27303).



Western blot analysis of extracts of various cell lines, using IMPDPH2 antibody (STJ27303) at 1:500 dilution. Secondary antibody: HRP Goat Anti-Rabbit IgG (H+L) (STJ3000856) at 1:10000 dilution. Lysates/proteins: 25 Mu g per lane. Blocking buffer: 3% nonfat dry milk in TBST. Detection: ECL Enhanced Kit. Exposure time: 180s.

This product is suitable for in-vitro studies under the RESEARCH USE ONLY [RUO] licence. This product must not be used as for diagnostic or other medical purposes.

St John's Laboratory Ltd, Knowledge Dock Business Centre, University Way, London, E16 2RD | Tel: 0208 223 3081