

Anti-GHRH antibody (37-55) (STJ27296)

STJ27296

GENERAL INFORMATION

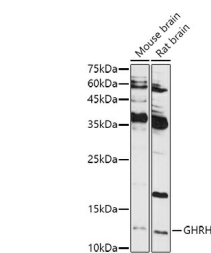
Product Type	Primary antibodies
Short Description	
Applications	WB/IF/ICC/ELISA
Host/Source	Rabbit
Reactivity	Human/Mouse/Rat

PRODUCT PROPERTIES

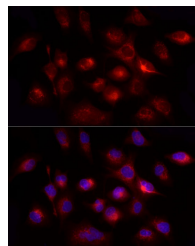
Clonality	Polyclonal
Clone ID	
Concentration	Lot specific
Conjugation	Unconjugated
Purification	Affinity purification
Dilution Range	WB:1:500-1:1000 IF/ICC:1:50-1:200 ELISA:Recommended starting concentration is 1 Mu g/mL. Please optimize the concentration based on your specific assay requirements.
Formulation	PBS with 0.05% Proclin300, 50% Glycerol, pH 7.3.
Isotype	IgG
Storage	Store at -20°C for up to 1 year from the date of receipt, and avoid repeat freeze-thaw cycles.
Instruction	

TARGET INFORMATION

Gene ID	2691
Gene Symbol	GHRH
Uniprot ID	SLIB_HUMAN
Immunogen	
Immunogen Region	37-55
Specificity	A synthetic peptide corresponding to a sequence within amino acids 1-100 of human GHRH (NP_066567.1).
Immunogen Sequence	MPLWVFFVILTSNSSHCS PPPPLTLRMRRYADAIFTNS YRKVLGQLSARKLLQDIMSR QQGESNQERGARARLGRQVD SMWAEQKQMELESILVALLO



Western blot analysis of extracts of various cell lines, using GHRH antibody (STJ27296) at 1:1000 dilution. Secondary antibody: HRP Goat Anti-rabbit IgG (H+L) (STJ5000856) at 1:10000 dilution. Lysates/proteins: 25 Mu g per lane. Blocking buffer: 3% non-fat dry milk in TBST. Detection: ECL Basic Kit. Exposure time: 180s.



Immunofluorescence analysis of NTERA-2 cells using GHRH rabbit polyclonal antibody (STJ27296) at dilution of 1:100 (40x lens). Blue: DAPI for nuclear staining.

This product is suitable for in-vitro studies under the RESEARCH USE ONLY [RUO] licence. This product must not be used as for diagnostic or other medical purposes.
St John's Laboratory Ltd, Knowledge Dock Business Centre, University Way, London, E16 2RD | Tel: 0208 223 3081