

Anti-PRKACB antibody (250-351) (STJ27277)

STJ27277

GENERAL INFORMATION

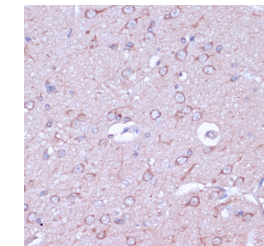
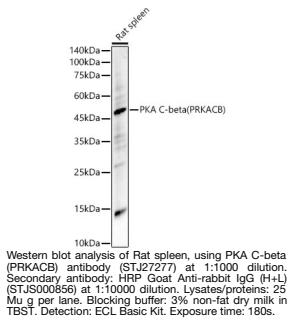
Product Type	Primary antibodies
Short Description	
Applications	WB/IHC-P/IF/ICC/ELISA
Host/Source	Rabbit
Reactivity	Human/Mouse/Rat

PRODUCT PROPERTIES

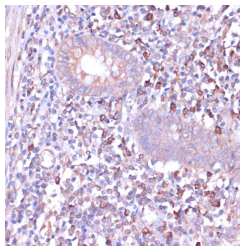
Clonality	Polyclonal
Clone ID	
Concentration	Lot specific
Conjugation	Unconjugated
Purification	Affinity purification
Dilution Range	WB:1:500-1:1000 IHC-P:1:50-1:200 IF/ICC:1:50-1:200 ELISA:Recommended starting concentration is 1 Mu g/mL. Please optimize the concentration based on your specific assay requirements.
Formulation	PBS with 0.05% Proclin300, 50% Glycerol, pH 7.3.
Isotype	IgG
Storage Instruction	Store at -20°C for up to 1 year from the date of receipt, and avoid repeat freeze-thaw cycles.

TARGET INFORMATION

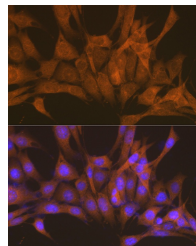
Gene ID	5567
Gene Symbol	PRKACB
Uniprot ID	KAPCB_HUMAN
Immunogen	
Immunogen Region	250-351
Specificity	A synthetic peptide corresponding to a sequence within amino acids 250-351 of human PKA C-beta (PRKACB) (NP_002722.1).
Immunogen Sequence	KIVSGKVRFPSPHFSSDLKDL LRNLLQVDLTKRFGNLKNGV SDIKTHKWFATTDWIAIYQR KVEAPFIPKFRGSGDTSNFD DYEEEDIRVSITEKCAKEFG EF



Immunohistochemistry analysis of paraffin-embedded rat brain using PKA C-beta (PRKACB) antibody (STJ27277) at dilution of 1:100 (40x lens). Perform microwave antigen retrieval with 10 mM PBS buffer pH 7. 2 before commencing with immunohistochemistry staining protocol.



Immunohistochemistry analysis of paraffin-embedded human appendix using PKA C-beta (PRKACB) antibody (STJ27277) at dilution of 1:100 (40x lens). Perform microwave antigen retrieval with 10 mM PBS buffer pH 7. 2 before commencing with immunohistochemistry staining protocol.



Immunofluorescence analysis of NIH-3T3 cells using PKA C-beta (PRKACB) rabbit polyclonal antibody (STJ27277) at dilution of 1:100 (40x lens). Blue: DAPI for nuclear staining.

This product is suitable for in-vitro studies under the RESEARCH USE ONLY [RUO] licence. This product must not be used as for diagnostic or other medical purposes.
St John's Laboratory Ltd, Knowledge Dock Business Centre, University Way, London, E16 2RD | Tel: 0208 223 3081