

## Anti-NOV antibody (32-357) (STJ27273)

STJ27273

### GENERAL INFORMATION

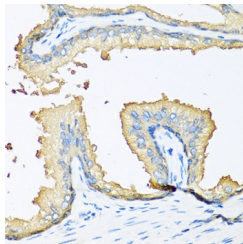
<b>Product Type</b>	Primary antibodies
<b>Short Description</b>	
<b>Applications</b>	IHC-P/ELISA
<b>Host/Source</b>	Rabbit
<b>Reactivity</b>	Human

### PRODUCT PROPERTIES

<b>Clonality</b>	Polyclonal
<b>Clone ID</b>	
<b>Concentration</b>	Lot specific
<b>Conjugation</b>	Unconjugated
<b>Purification</b>	Affinity purification
<b>Dilution</b>	IHC-P:1:50-1:100
<b>Range</b>	ELISA:Recommended starting concentration is 1 µg/mL. Please optimize the concentration based on your specific assay requirements.
<b>Formulation</b>	PBS with 0.02% Sodium Azide, 50% Glycerol, pH 7.3.
<b>Isotype</b>	IgG
<b>Storage</b>	Store at -20°C for up to 1 year from the date of receipt, and avoid repeat freeze-thaw cycles.
<b>Instruction</b>	

### TARGET INFORMATION

<b>Gene ID</b>	4856
<b>Gene Symbol</b>	CCN3
<b>Uniprot ID</b>	CCN3_HUMAN
<b>Immunogen</b>	
<b>Immunogen Region</b>	32-357
<b>Specificity</b>	Recombinant fusion protein containing a sequence corresponding to amino acids 32-357 of human NOV (NP_002505.1).
<b>Immunogen Sequence</b>	TQRCPPQCPGRCPTPTCA PGVRAVLGDCSCCLVCARQR GESCSDLPCDESSGLYCDR SADPSNQTGICTAVEGDNCV FDGVIYRSGEKFQPSCKFQC TCRDGGQIGCVPRQLDVLLP EPNCPAPRKVEVPGECKEWW ICGPDEEDSLGGLTLAAYRP EATLGVEVSDSSVNCIEQTT EWTACSKSCGMGFSTRVTNR NRQCEMLKQTRLCLMVRPCEQ EPEQPTDKKGKKCLRTKKS



Immunohistochemistry analysis of paraffin-embedded human prostate using NOV antibody (STJ27273) at dilution of 1:100 (40x lens). Perform microwave antigen retrieval with 10 mM PBS buffer pH 7.2 before commencing with immunohistochemistry staining protocol.