

## Anti-CPT1A antibody (520-720) (STJ27260)

STJ27260

### GENERAL INFORMATION

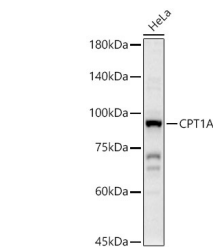
<b>Product Type</b>	Primary antibodies
<b>Short Description</b>	
<b>Applications</b>	WB/IHC-P/IF/ICC/ELISA
<b>Host/Source</b>	Rabbit
<b>Reactivity</b>	Human/Mouse/Rat

### PRODUCT PROPERTIES

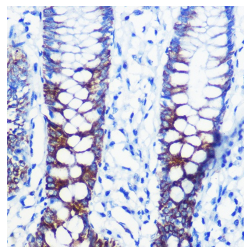
<b>Clonality</b>	Polyclonal
<b>Clone ID</b>	
<b>Concentration</b>	Lot specific
<b>Conjugation</b>	Unconjugated
<b>Purification</b>	Affinity purification
<b>Dilution</b>	WB:1:1000-1:5000
<b>Range</b>	IHC-P:1:50-1:200 IF/ICC:1:50-1:200 ELISA:Recommended starting concentration is 1 µg/mL. Please optimize the concentration based on your specific assay requirements.
<b>Formulation</b>	PBS with 0.09% Sodium Azide, 50% Glycerol, pH 7.3.
<b>Isotype</b>	IgG
<b>Storage</b>	Store at -20°C for up to 1 year from the date of receipt, and avoid repeat freeze-thaw cycles.
<b>Instruction</b>	

### TARGET INFORMATION

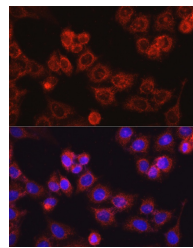
<b>Gene ID</b>	1374
<b>Gene Symbol</b>	CPT1A
<b>Uniprot ID</b>	CPT1A_HUMAN
<b>Immunogen</b>	
<b>Immunogen Region</b>	520-720
<b>Specificity</b>	Recombinant fusion protein containing a sequence corresponding to amino acids 520-720 of human CPT1A (NP_001867.2).
<b>Immunogen Sequence</b>	WDIPGECQVEIETSLNTANL LANDVDFHSFPFVAFGKGII KKCRTSPDAFVQLALQLAHY KDMGKFCLTYEASMTLRFRE GRTEIVRSCTTESCDFVRAM VDPAQTV EQRLKLFKLASEK HQHMYRLAMTGGIDRHLFC LYVWSKYLAVESPFKEVLS EPWRLSTSQTQQQVELFDL ENNPEYVSSGGGFGPVADDG Y



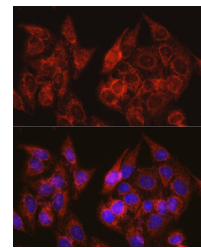
Western blot analysis of HeLa, using CPT1A rabbit polyclonal antibody (STJ27260) at 1:2000 dilution. Secondary antibody: HRP Goat Anti-rabbit IgG (H+L) (STJ5000856) at 1:10000 dilution. Lysates/proteins: 25µg per lane. Blocking buffer: 3% non-fat dry milk in TBST. Detection: ECL Basic kit. Exposure time: 60s.



Immunohistochemistry analysis of paraffin-embedded human colon using CPT1A rabbit polyclonal antibody (STJ27260) at dilution of 1:100 (40x lens). Perform high pressure antigen retrieval with 10 mM citrate buffer pH 6.0 before commencing with immunohistochemistry staining protocol.



Immunofluorescence analysis of HeLa cells using CPT1A rabbit polyclonal antibody (STJ27260) at dilution of 1:100 (40x lens). Blue: DAPI for nuclear staining.



Immunofluorescence analysis of U2OS cells using CPT1A rabbit polyclonal antibody (STJ27260) at dilution of 1:100 (40x lens). Blue: DAPI for nuclear staining.

This product is suitable for in-vitro studies under the RESEARCH USE ONLY [RUO] licence. This product must not be used as for diagnostic or other medical purposes.

St John's Laboratory Ltd, Knowledge Dock Business Centre, University Way, London, E16 2RD | Tel: 0208 223 3081