

Anti-CBFB antibody (1-182) (STJ27258)

STJ27258

GENERAL INFORMATION

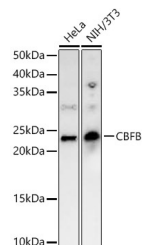
Product Type	Primary antibodies
Short Description	
Applications	WB/IHC-P/IF/ICC/ELISA
Host/Source	Rabbit
Reactivity	Human/Mouse/Rat

PRODUCT PROPERTIES

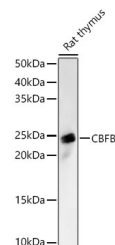
Clonality	Polyclonal
Clone ID	
Concentration	Lot specific
Conjugation	Unconjugated
Purification	Affinity purification
Dilution	WB:1:1000-1:5000
Range	IHC-P:1:50-1:200 IF/ICC:1:50-1:200 ELISA:Recommended starting concentration is 1 μ g/mL. Please optimize the concentration based on your specific assay requirements.
Formulation	PBS with 0.02% Sodium Azide, 50% Glycerol, pH 7.3.
Isotype	IgG
Storage	Store at -20°C for up to 1 year from the date of receipt, and avoid repeat freeze-thaw cycles.
Instruction	

TARGET INFORMATION

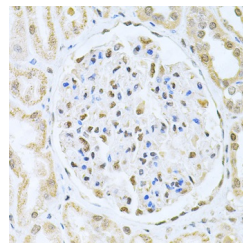
Gene ID	865
Gene Symbol	CBFB
Uniprot ID	PEBB_HUMAN
Immunogen	
Immunogen Region	1-182
Specificity	Recombinant fusion protein containing a sequence corresponding to amino acids 1-182 of human CBFB (NP_001746.1).
Immunogen Sequence	MPRVVPDQRSKFENEFFRK LSRECEIKYTGFDRPHEER QARFQACRDGRSEIAFVAT GTNLSLQFFPASWQGEQRQT PSREYVDLEREAGKVYLKAP MILNGVCVWKGWIDLQRLD GMGCLFDEERAQQEDALAQ QAFEEARRRTREFEDRDRSH REEMEVRSQLLAVTGKKTT RP



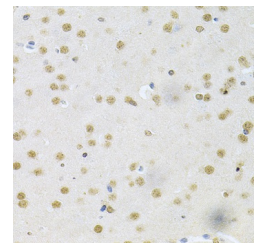
Western blot analysis of various lysates, using CBFB rabbit polyclonal antibody (STJ27258) at 1:2000 dilution. Secondary antibody: HRP Goat Anti-rabbit IgG (H+L) (STJS000856) at 1:10000 dilution. Lysates/proteins: 25 μ g per lane. Blocking buffer: 3% non-fat dry milk in TBST. Detection: ECL Basic Kit. Exposure time: 90s.



Western blot analysis of Rat thymus, using CBFB rabbit polyclonal antibody (STJ27258) at 1:2000 dilution. Secondary antibody: HRP Goat Anti-rabbit IgG (H+L) (STJS000856) at 1:10000 dilution. Lysates/proteins: 25 μ g per lane. Blocking buffer: 3% non-fat dry milk in TBST. Detection: ECL Basic Kit. Exposure time: 60s.



Immunohistochemistry analysis of paraffin-embedded human kidney cancer using CBFB Antibody (STJ27258) at dilution of 1:200 (40x lens). Perform microwave antigen retrieval with 10 mM PBS buffer pH 7.2 before commencing with immunohistochemistry staining protocol.



Immunohistochemistry analysis of paraffin-embedded mouse brain using CBFB Antibody (STJ27258) at dilution of 1:200 (40x lens). Perform microwave antigen retrieval with 10 mM PBS buffer pH 7.2 before commencing with immunohistochemistry staining protocol.

This product is suitable for in-vitro studies under the RESEARCH USE ONLY [RUO] licence. This product must not be used as for diagnostic or other medical purposes.
St John's Laboratory Ltd, Knowledge Dock Business Centre, University Way, London, E16 2RD | Tel: 0208 223 3081