

Anti-EIF4A1 antibody (1-100) (STJ27247)
STJ27247

GENERAL INFORMATION

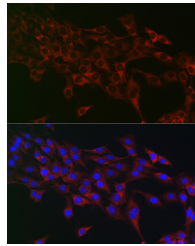
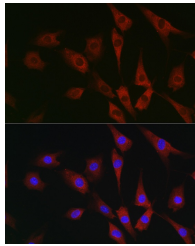
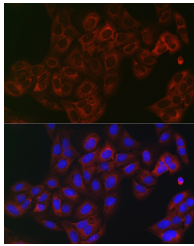
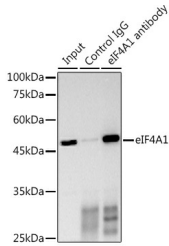
Product Type	Primary antibodies
Short Description	
Applications	WB/IF/CC/IP/ELISA
Host/Source	Rabbit
Reactivity	Human/Mouse/Rat

PRODUCT PROPERTIES

Clonality	Polyclonal
Clone ID	
Concentration	Lot specific
Conjugation	Unconjugated
Purification	Affinity purification
Dilution Range	WB:1:1000-1:5000 IF/CC:1:50-1:200 IP:0.5 Mu g-4 Mu g antibody for 200 Mu g-400 Mu g extracts of whole cells ELISA:Recommended starting concentration is 1 Mu g/mL. Please optimize the concentration based on your specific assay requirement
Formulation	PBS with 0.05% Proclin300, 50% Glycerol, pH 7.3.
Isotype	IgG
Storage Instruction	Store at -20°C for up to 1 year from the date of receipt, and avoid repeat freeze-thaw cycles.

TARGET INFORMATION

Gene ID	1973
Gene Symbol	EIF4A1
Uniprot ID	IF4A1_HUMAN
Immunogen	
Immunogen Region	1-100
Specificity	A synthetic peptide corresponding to a sequence within amino acids 1-100 of human eIF4A1 (NP_001407.1).
Immunogen Sequence	MSASQDSRSRDNGPDGMEPE GVIESNWNEIVDSFDDMNLS ESLLRGIYAYGF EKPSAIQQ RAILPCIKGYDVIAQAQSGT GKTATFAISILQQIELDLKA



Immunoprecipitation analysis of 300 Mu g extracts of HeLa cells using 3 Mu g eIF4A1 antibody (STJ27247). Western blot was performed from the immunoprecipitate using eIF4A1 antibody (STJ27247) at a dilution of 1:1000.