

## Anti-LARP4 antibody (1-120) (STJ27094)

STJ27094

### GENERAL INFORMATION

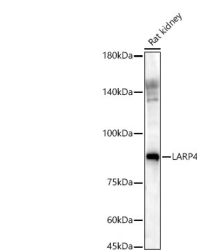
<b>Product Type</b>	Primary antibodies
<b>Short Description</b>	
<b>Applications</b>	WB/IF/ICC/ELISA
<b>Host/Source</b>	Rabbit
<b>Reactivity</b>	Mouse/Rat

### PRODUCT PROPERTIES

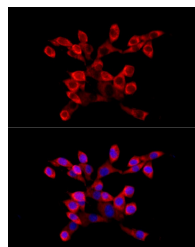
<b>Clonality</b>	Polyclonal
<b>Clone ID</b>	
<b>Concentration</b>	Lot specific
<b>Conjugation</b>	Unconjugated
<b>Purification</b>	Affinity purification
<b>Dilution Range</b>	WB:1:500-1:1000 IF/ICC:1:50-1:200 ELISA:Recommended starting concentration is 1 Mu g/mL. Please optimize the concentration based on your specific assay requirements.
<b>Formulation</b>	PBS with 0.02% Sodium Azide, 50% Glycerol, pH 7.3.
<b>Isotype</b>	IgG
<b>Storage Instruction</b>	Store at -20°C for up to 1 year from the date of receipt, and avoid repeat freeze-thaw cycles.

### TARGET INFORMATION

<b>Gene ID</b>	113251
<b>Gene Symbol</b>	LARP4
<b>Uniprot ID</b>	LARP4_HUMAN
<b>Immunogen</b>	
<b>Immunogen Region</b>	1-120
<b>Specificity</b>	Recombinant fusion protein containing a sequence corresponding to amino acids 1-120 of human LARP4 (NP_443111.4).
<b>Immunogen Sequence</b>	MLLFVEQVASKGTGLNPNNAK VWQEIAPGNTDATPVTHGTE SSWHEIAATSGAHPEGNAEL SEDICKEYEVMYSSSCETTR NTTGIEESTDGMLGPEDLS YQIYDVSGESNSAVSTEDLK



Western blot analysis of Rat kidney, using LARP4 antibody (STJ27094) at 1:900 dilution. Secondary antibody: HRP Goat Anti-rabbit IgG (H+L) (STJ200856) at 1:10000 dilution. Lysates/proteins: 25 Mu g per lane. Blocking buffer: 3% non-fat dry milk in TBST. Detection: ECL Basic Kit. Exposure time: 60s.



Immunofluorescence analysis of NIH/3T3 cells using LARP4 rabbit polyclonal antibody (STJ27094) at dilution of 1:100 (40x lens). Blue: DAPI for nuclear staining.