

Anti-LPCAT1 antibody (325-534) (STJ27005)

STJ27005

GENERAL INFORMATION

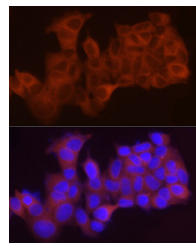
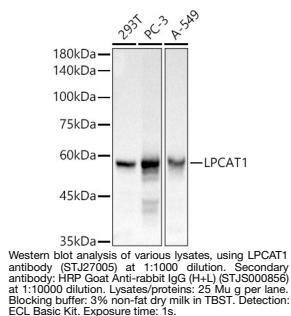
Product Type	Primary antibodies
Short Description	
Applications	WB/IF/ICC/ELISA
Host/Source	Rabbit
Reactivity	Human/Mouse/Rat

PRODUCT PROPERTIES

Clonality	Polyclonal
Clone ID	
Concentration	Lot specific
Conjugation	Unconjugated
Purification	Affinity purification
Dilution	WB:1:500-1:1000
Range	IF/CC:1:50-1:200
	ELISA:Recommended starting concentration is 1 μ g/mL. Please optimize the concentration based on your specific assay requirements.
Formulation	PBS with 0.02% Sodium Azide, 50% Glycerol, pH 7.3.
Isotype	IgG
Storage Instruction	Store at -20°C for up to 1 year from the date of receipt, and avoid repeat freeze-thaw cycles.

TARGET INFORMATION

Gene ID	79888
Gene Symbol	LPCAT1
Uniprot ID	PCAT1_HUMAN
Immunogen	
Immunogen Region	325-534
Specificity	Recombinant fusion protein containing a sequence corresponding to amino acids 325-534 of human LPCAT1 (NP_079106.3).
Immunogen Sequence	LPADTCLEFARLVRGLGLK PEKLEKDLDRYSERARMKGG EKIGIAEFAASLEVPVSDLL EDMFSLFDESGSGEVDLREC VVALSVVCRPARTLDTIQLA FKMYGAQEDGSGEGDLSCI LKTALGVAELTVTDLFRAID QEEKGKITFADFHRFAEMYP AFAEYLYPDQTHFESCAET SPAPIPNGFCADFPENSDA GRKPVRKKLD



Immunofluorescence analysis of MCF7 cells using LPCAT1 rabbit polyclonal antibody (STJ27005) at dilution of 1:50 (40x lens). Blue: DAPI for nuclear staining.

This product is suitable for in-vitro studies under the RESEARCH USE ONLY [RUO] licence. This product must not be used as for diagnostic or other medical purposes.
St John's Laboratory Ltd, Knowledge Dock Business Centre, University Way, London, E16 2RD | Tel: 0208 223 3081