

**Anti-CKM antibody (3-381) (STJ26196)**

STJ26196

**GENERAL INFORMATION**

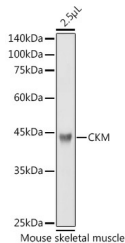
<b>Product Type</b>	Primary antibodies
<b>Short Description</b>	
<b>Applications</b>	WB/IF/ICC/ELISA
<b>Host/Source</b>	Rabbit
<b>Reactivity</b>	Human/Mouse/Rat

**PRODUCT PROPERTIES**

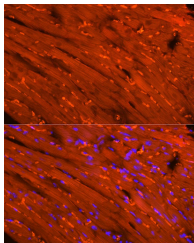
<b>Clonality</b>	Polyclonal
<b>Clone ID</b>	
<b>Concentration</b>	Lot specific
<b>Conjugation</b>	Unconjugated
<b>Purification</b>	Affinity purification
<b>Dilution</b>	WB:1:1000-1:5000
<b>Range</b>	IF/CC:1:20-1:200 ELISA:Recommended starting concentration is 1 $\mu$ g/mL. Please optimize the concentration based on your specific assay requirements.
<b>Formulation</b>	PBS with 0.02% Sodium Azide, 50% Glycerol, pH 7.3.
<b>Isotype</b>	IgG
<b>Storage Instruction</b>	Store at -20°C for up to 1 year from the date of receipt, and avoid repeat freeze-thaw cycles.

**TARGET INFORMATION**

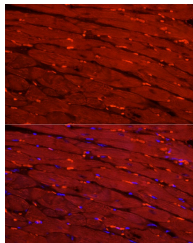
<b>Gene ID</b>	1158
<b>Gene Symbol</b>	CKM
<b>Uniprot ID</b>	KCRM_HUMAN
<b>Immunogen</b>	
<b>Immunogen Region</b>	3-381
<b>Specificity</b>	Recombinant fusion protein containing a sequence corresponding to amino acids 3-381 of human CKM (NP_001815.2).
<b>Immunogen Sequence</b>	FGNTHNKFKNYKPEEEYPD LSKHNNHMAKVLTELYKKL RDKETPSGFTVDDVIQTGVD NPGHPFIMTVGCVAGDEESY EVFKELFDPIISDRHGGYKP TDKHKTDLNHENLKGDDLD PNYVLSSRVRTGRSIKGYTL PPHCSRGERRAVEKLSVEAL NSLTGEFGKGYPLKSMTEK EQQLIDDFLFDKPVSPLL LASGMARDWPDARGIWHNDN KSFLVWVNEEDHLRVISME



Western blot analysis of extracts of mouse skeletal muscle, using CKM antibody (STJ26196) at 1:3000 dilution. Secondary antibody: HRP Goat Anti-rabbit IgG (H+L) (STJ5000856) at 1:10000 dilution. Lysates/proteins: 25  $\mu$ g per lane. Blocking buffer: 3% non-fat dry milk in TBST. Detection: ECL Basic Kit. Exposure time: 1s.



Perform high pressure antigen retrieval with 10 mM citrate buffer pH 6.0 before commencing with IF staining protocol. Immunofluorescence analysis of mouse heart cells using CKM rabbit polyclonal antibody (STJ26196) at dilution of 1:20 (40x lens). Blue: DAPI for nuclear staining.



Perform high pressure antigen retrieval with 10 mM citrate buffer pH 6.0 before commencing with IF staining protocol. Immunofluorescence analysis of rat heart cells using CKM rabbit polyclonal antibody (STJ26196) at dilution of 1:20 (40x lens). Blue: DAPI for nuclear staining.

This product is suitable for in-vitro studies under the RESEARCH USE ONLY [RUO] licence. This product must not be used as for diagnostic or other medical purposes.

St John's Laboratory Ltd, Knowledge Dock Business Centre, University Way, London, E16 2RD | Tel: 0208 223 3081