

Anti-GPC3 antibody (537-554) (STJ26187)

STJ26187

GENERAL INFORMATION

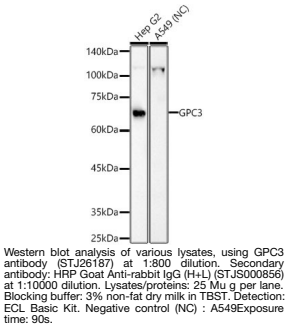
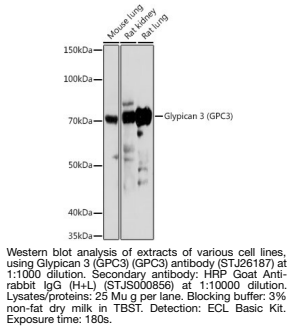
Product Type	Primary antibodies
Short Description	
Applications	WB/IF/ICC/FC/ELISA
Host/Source	Rabbit
Reactivity	Human/Mouse/Rat

PRODUCT PROPERTIES

Clonality	Polyclonal
Clone ID	
Concentration	Lot specific
Conjugation	Unconjugated
Purification	Affinity purification
Dilution Range	WB:1:500-1:1000 IF/ICC:1:50-1:200 FC:1:50-1:200 ELISA:Recommended starting concentration is 1 Mu g/mL. Please optimize the concentration based on your specific assay requirements.
Formulation	PBS with 0.02% Sodium Azide, 50% Glycerol, pH 7.3.
Isotype	IgG
Storage Instruction	Store at -20°C for up to 1 year from the date of receipt, and avoid repeat freeze-thaw cycles.

TARGET INFORMATION

Gene ID	2719
Gene Symbol	GPC3
Uniprot ID	GPC3_HUMAN
Immunogen	
Immunogen Region	537-554
Specificity	A synthetic peptide corresponding to a sequence within amino acids 481-580 of human Glypican 3 (GPC3) (NP_004475.1).
Immunogen Sequence	GRVLDKNLDEEGFESGDCGD DEDECIGGSGDGMIVKNQL RFLAELAYDLVDVDDAPGNSQ QATPKDNEISTFHNLGNVHS PLKLLTSMASVWCFFFLVH



This product is suitable for in-vitro studies under the RESEARCH USE ONLY [RUO] licence. This product must not be used as for diagnostic or other medical purposes.
St John's Laboratory Ltd, Knowledge Dock Business Centre, University Way, London, E16 2RD | Tel: 0208 223 3081