

Anti-IL24 antibody (52-140) (STJ26183)

STJ26183

GENERAL INFORMATION

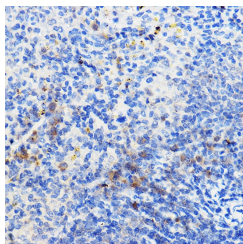
Product Type	Primary antibodies
Short Description	
Applications	WB/IHC-P/ELISA
Host/Source	Rabbit
Reactivity	Mouse/Rat

PRODUCT PROPERTIES

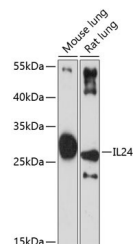
Clonality	Polyclonal
Clone ID	
Concentration	Lot specific
Conjugation	Unconjugated
Purification	Affinity purification
Dilution Range	WB:1:500-1:2000 IHC-P:1:50-1:200 ELISA:Recommended starting concentration is 1 µg/mL. Please optimize the concentration based on your specific assay requirements.
Formulation	PBS with 0.09% Sodium Azide, 50% Glycerol, pH 7.3.
Isotype	IgG
Storage Instruction	Store at -20°C for up to 1 year from the date of receipt, and avoid repeat freeze-thaw cycles.

TARGET INFORMATION

Gene ID	11009
Gene Symbol	IL24
Uniprot ID	IL24_HUMAN
Immunogen	
Immunogen Region	52-140
Specificity	Recombinant fusion protein containing a sequence corresponding to amino acids 52-140 of human IL24 (NP_001172085.1). GQEFHFGPCQVKGVPQKLW EAFWAVKDTMQAQDNITSAR LLQQEVLQNVSDAESCYLEVH TLLEFYLKTVFKNYHNRTVE
Immunogen Sequence	VRTLKSFST



Immunohistochemistry analysis of IL24 in paraffin-embedded mouse spleen using IL24 Rabbit polyclonal antibody (STJ26183) at dilution of 1:100 (40x lens). Perform high pressure antigen retrieval with 10 mM citrate buffer, pH 6.0 before commencing with immunohistochemistry staining protocol.



Western blot analysis of various lysates using IL24 Rabbit polyclonal antibody (STJ26183) at 1:3000 dilution. Secondary antibody: HRP Goat Anti-Rabbit IgG (H+L) (STJ5000656) at 1:10000 dilution. Lysates/proteins: 25 µg per lane. Blocking buffer: 3% nonfat dry milk in TBST. Detection: ECL Basic Kit. Exposure time: 90s.

This product is suitable for in-vitro studies under the RESEARCH USE ONLY [RUO] licence. This product must not be used as for diagnostic or other medical purposes.
St John's Laboratory Ltd, Knowledge Dock Business Centre, University Way, London, E16 2RD | Tel: 0208 223 3081