

Anti-XRCC1 antibody (480-633) (STJ26128)
STJ26128

GENERAL INFORMATION

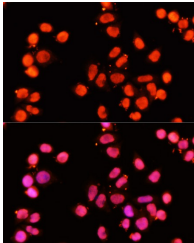
Product Type	Primary antibodies
Short Description	
Applications	WB/IHC-P/IF/ICC/ELISA
Host/Source	Rabbit
Reactivity	Human/Mouse/Rat

PRODUCT PROPERTIES

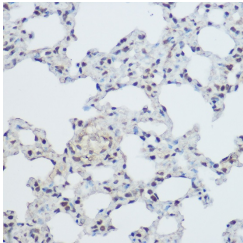
Clonality	Polyclonal
Clone ID	
Concentration	Lot specific
Conjugation	Unconjugated
Purification	Affinity purification
Dilution	WB:1:500-1:1000
Range	IHC-P:1:100-1:500 IF/ICC:1:50-1:200 ELISA:Recommended starting concentration is 1 μ g/mL. Please optimize the concentration based on your specific assay requirements.
Formulation	PBS with 0.09% Sodium Azide, 50% Glycerol, pH 7.3.
Isotype	IgG
Storage	Store at -20°C for up to 1 year from the date of receipt, and avoid repeat freeze-thaw cycles.
Instruction	

TARGET INFORMATION

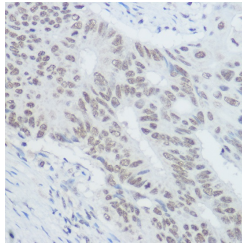
Gene ID	7515
Gene Symbol	XRCC1
Uniprot ID	XRCC1_HUMAN
Immunogen	
Immunogen Region	480-633
Specificity	Recombinant fusion protein containing a sequence corresponding to amino acids 480-633 of human XRCC1 (NP_006288.2).
Immunogen Sequence	NGAEDSGDTEDELRRVAEQK EHLRPPGQEENGEDPYAGST DENTDSEEHQEPPDLPVPEL PDFFQGKHFFLYGEFFPGDER RKLIRYVTAFNGELEDYMSD RVQFVITAQEWDPSEFEALM DNPSLAFVRPRWIYSCNEKQ KLLPHQLYGWVPQA



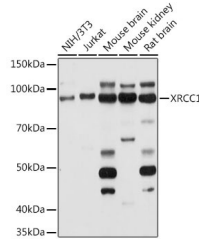
Immunofluorescence analysis of HeLa cells using XRCC1 antibody (STJ26128) at dilution of 1:100 (40x lens). Blue: DAPI for nuclear staining.



Immunohistochemistry analysis of paraffin-embedded mouse lung using XRCC1 Rabbit polyclonal antibody (STJ26128) at dilution of 1:300 (40x lens). Perform high pressure antigen retrieval with 10 mM citrate buffer pH 6.0 before commencing with immunohistochemistry staining protocol.



Immunohistochemistry analysis of paraffin-embedded human colon carcinoma using XRCC1 Rabbit polyclonal antibody (STJ26128) at dilution of 1:300 (40x lens). Perform high pressure antigen retrieval with 10 mM citrate buffer pH 6.0 before commencing with immunohistochemistry staining protocol.



Western blot analysis of extracts of various cell lines using XRCC1 antibody (STJ26128) at 1:1000 dilution. Secondary antibody: HRP Goat Anti-Rabbit IgG (H+L) (STJ5000856) at 1:10000 dilution. Lysates/proteins: 25 μ g per lane. Blocking buffer: 3% nonfat dry milk in TBST. Detection: ECL Basic Kit. Exposure time: 10s.

This product is suitable for in-vitro studies under the RESEARCH USE ONLY [RUO] licence. This product must not be used as for diagnostic or other medical purposes.
St John's Laboratory Ltd, Knowledge Dock Business Centre, University Way, London, E16 2RD | Tel: 0208 223 3081