

**Anti-UQCRC2 antibody (224-453) (STJ26050)**  
STJ26050

**GENERAL INFORMATION**

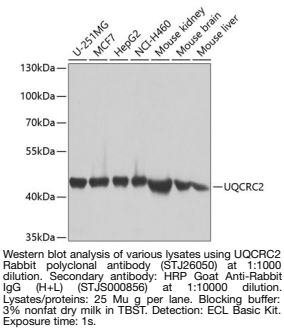
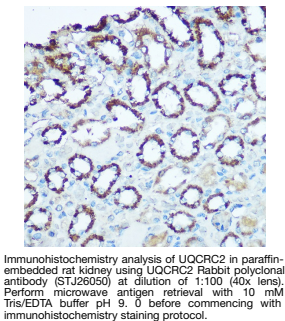
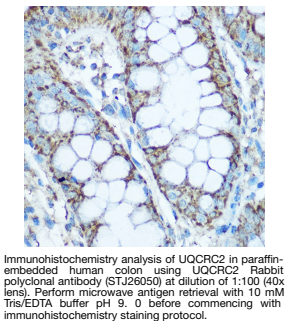
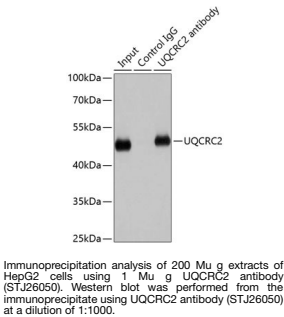
<b>Product Type</b>	Primary antibodies
<b>Short Description</b>	
<b>Applications</b>	WB/IHC-P/IF/ICC/IP/ELISA
<b>Host/Source</b>	Rabbit
<b>Reactivity</b>	Human/Mouse/Rat

**PRODUCT PROPERTIES**

<b>Clonality</b>	Polyclonal
<b>Clone ID</b>	
<b>Concentration</b>	Lot specific
<b>Conjugation</b>	Unconjugated
<b>Purification</b>	Affinity purification
<b>Dilution Range</b>	WB: 1:500-1:2000 IHC-P: 1:50-1:200 IF/ICC: 1:50-1:200 IP: 0.5 µg-4 µg antibody for 200 µg-400 µg extracts of whole cells ELISA: Recommended starting concentration is 1 µg/mL. Please optimize the concentration based on your speci
<b>Formulation</b>	PBS with 0.02% Sodium Azide, 50% Glycerol, pH 7.3.
<b>Isotype</b>	IgG
<b>Storage Instruction</b>	Store at -20°C for up to 1 year from the date of receipt, and avoid repeat freeze-thaw cycles.

**TARGET INFORMATION**

<b>Gene ID</b>	7385
<b>Gene Symbol</b>	UQCRC2
<b>Uniprot ID</b>	QCR2_HUMAN
<b>Immunogen</b>	
<b>Region</b>	224-453
<b>Specificity</b>	Recombinant fusion protein containing a sequence corresponding to amino acids 224-453 of human UQCRC2 (NP_003357.2).
<b>Immunogen Sequence</b>	GVSHPLVKQVAEQFLNMRGG LGLSGAKANYRGGEIREQNG DSLVHAAFVAESAVAGSAEA NAFSVLQHLVGAGPHVKRGS NTTSHLHQAVAKATQQPFDV SAFNASYSDSGLFGIYTISQ ATAAGDVIKAAYNQVKTIQ GNLSNTDVQAAKNKLKAGYL MSVESSECFLEEVGSQALVA GSYMPPSTVLQQIDSVANAD IINAAGKFVSGQKSMAASGN LGHTPFVDEL



This product is suitable for in-vitro studies under the RESEARCH USE ONLY [RUO] licence. This product must not be used as for diagnostic or other medical purposes.  
St John's Laboratory Ltd, Knowledge Dock Business Centre, University Way, London, E16 2RD | Tel: 0208 223 3081