

Anti-TYR antibody (20-340) (STJ26003)
STJ26003

GENERAL INFORMATION

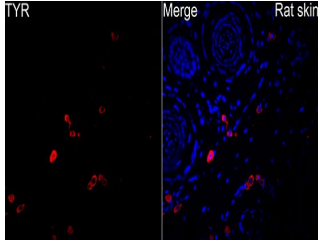
Product Type	Primary antibodies
Short Description	
Applications	WB/IHC-P/IF/ICC/ELISA
Host/Source	Rabbit
Reactivity	Human/Mouse/Rat

PRODUCT PROPERTIES

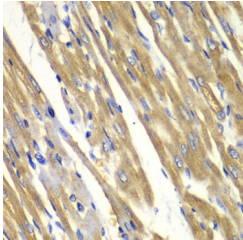
Clonality	Polyclonal
Clone ID	
Concentration	Lot specific
Conjugation	Unconjugated
Purification	Affinity purification
Dilution	WB:1:500-1:1000
Range	IHC-P:1:50-1:200 IF/ICC:1:50-1:200 ELISA:Recommended starting concentration is 1 μ g/mL. Please optimize the concentration based on your specific assay requirements.
Formulation	PBS with 0.05% Proclin300, 50% Glycerol, pH 7.3.
Isotype	IgG
Storage	Store at-20°C for up to 1 year from the date of receipt, and avoid repeat freeze-thaw cycles.
Instruction	

TARGET INFORMATION

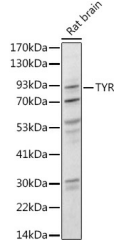
Gene ID	7299
Gene Symbol	TYR
Uniprot ID	TYRO_HUMAN
Immunogen	
Immunogen	20-340
Region	
Specificity	A synthetic peptide corresponding to a sequence within amino acids 20-340 of human Tyrosinase (NP_000363.1).
Immunogen	PWSGDRSPCGQLSGRGSCQN ILLSNAPLGPQFPFTGVDDR ESWPSVFYNRTCQCSCGNFMG FNCGNCKFGFWGPNCTERRL
Sequence	LVRNIFDLSAPEKDKFFAY LTLAKHTISSDYVPIGYG QMKNGSTPMFNDINIYDLFV WMHYVSM DALLGGSEIWRD IDFAHEAPAFLPWHLRLLR WEQEIQKLTGDEFNTIPYWD WRDAEKDICTDEYMGQGHP TNPNLLSPASFFSSWQIVC



Immunofluorescence analysis of paraffin-embedded Rat skin using Tyrosinase Rabbit polyclonal antibody (STJ26003) at a dilution of 1:100 (40x lens). Secondary antibody: Cy3 Goat Anti-Rabbit IgG (H+L) at 1:500 dilution. Blue: DAPI for nuclear staining. Perform high pressure antigen retrieval with 0.01 M citrate buffer (pH 6.0) prior to IF staining.



Immunohistochemistry analysis of paraffin-embedded rat heart using Tyrosinase antibody (STJ26003) at dilution of 1:100 (40x lens). Perform microwave antigen retrieval with 10 mM PBS buffer pH 7.2 before commencing with immunohistochemistry staining protocol.



Western blot analysis of extracts of Rat brain, using Tyrosinase antibody (STJ26003) at 1:1000 dilution. Secondary antibody: HRP Goat Anti-Rabbit IgG (H+L) (STJS000856) at 1:10000 dilution. Lysates/proteins: 25 μ g per lane. Blocking buffer: 3% nonfat dry milk in TBST. Detection: ECL Basic Kit. Exposure time: 90s.

This product is suitable for in-vitro studies under the RESEARCH USE ONLY [RUO] licence. This product must not be used as for diagnostic or other medical purposes.
St John's Laboratory Ltd, Knowledge Dock Business Centre, University Way, London, E16 2RD | Tel: 0208 223 3081