

## Anti-TRAF7 antibody (380-479) (STJ25956)

### GENERAL INFORMATION

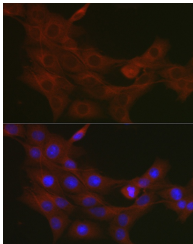
|                          |                       |
|--------------------------|-----------------------|
| <b>Product Type</b>      | Primary antibodies    |
| <b>Short Description</b> |                       |
| <b>Applications</b>      | WB/IHC-P/IF/ICC/ELISA |
| <b>Host/Source</b>       | Rabbit                |
| <b>Reactivity</b>        | Human/Mouse/Rat       |

### PRODUCT PROPERTIES

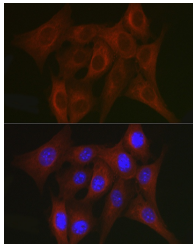
|                            |   |
|----------------------------|---|
| <b>Clonality</b>           | Polyclonal  |
| <b>Clone ID</b>            |   |
| <b>Concentration</b>       | Lot specific  |
| <b>Conjugation</b>         | Unconjugated  |
| <b>Purification</b>        | Affinity purification   |
| <b>Dilution Range</b>      | WB:1:500-1:1000<br>IHC-P:1:50-1:200<br>IF/ICC:1:50-1:100<br>ELISA:Recommended starting concentration is 1 µg/mL. Please optimize the concentration based on your specific assay requirements. |
| <b>Formulation</b>         | PBS with 0.05% Proclin300, 50% Glycerol, pH 7.3.  |
| <b>Isotype</b>             | IgG   |
| <b>Storage Instruction</b> | Store at -20°C for up to 1 year from the date of receipt, and avoid repeat freeze-thaw cycles.  |

### TARGET INFORMATION

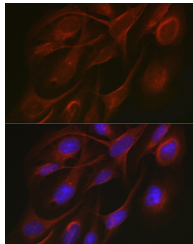
|                           |   |
|---------------------------|---|
| <b>Gene ID</b>            | 84231   |
| <b>Gene Symbol</b>        | TRAF7   |
| <b>Uniprot ID</b>         | TRAF7_HUMAN   |
| <b>Immunogen</b>          |   |
| <b>Immunogen Region</b>   | 380-479   |
| <b>Specificity</b>        | Recombinant fusion protein containing a sequence corresponding to amino acids 380-479 of human TRAF7 (NP_115647.2). |
| <b>Immunogen Sequence</b> | YDPQQIFKCKGTFVGHQGPV WCLCVYSMDLLFSGSSDKT IKWWDTCCTTYKCQKTLEGHD GIVLALCIQGCKLYSGSADC<br>TIIVWDIQLQLQKVNITRAHD        |



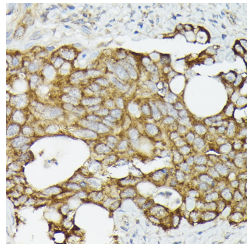
Immunofluorescence analysis of PC-12 cells using TRAF7 antibody (STJ25956) at dilution of 1:50. Blue: DAPI for nuclear staining.



Immunofluorescence analysis of NIH/3T3 cells using TRAF7 antibody (STJ25956) at dilution of 1:50. Blue: DAPI for nuclear staining.



Immunofluorescence analysis of U2OS cells using TRAF7 antibody (STJ25956) at dilution of 1:50. Blue: DAPI for nuclear staining.



Immunohistochemistry analysis of paraffin-embedded human colon carcinoma using TRAF7 antibody (STJ25956) at dilution of 1:50 (40x lens). Perform high pressure antigen retrieval with 10 mM citrate buffer pH 6.0 before commencing with immunohistochemistry staining protocol.

This product is suitable for in-vitro studies under the RESEARCH USE ONLY [RUO] licence. This product must not be used as for diagnostic or other medical purposes.  
St John's Laboratory Ltd, Knowledge Dock Business Centre, University Way, London, E16 2RD | Tel: 0208 223 3081