

Anti-TNF antibody (134-233) (STJ25882)
STJ25882

GENERAL INFORMATION

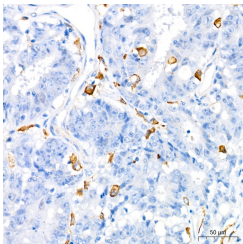
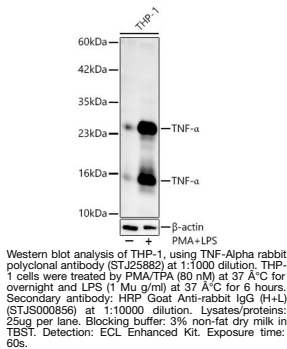
Product Type	Primary antibodies
Short Description	
Applications	WB/IHC-P/IF/ICC/ELISA
Host/Source	Rabbit
Reactivity	Human/Mouse/Rat

PRODUCT PROPERTIES

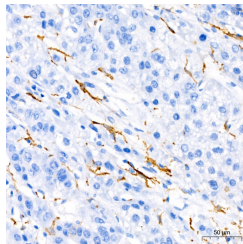
Clonality	Polyclonal
Clone ID	
Concentration	Lot specific
Conjugation	Unconjugated
Purification	Affinity purification
Dilution Range	WB:1:500-1:2000 IHC-P:1:500-1:1000 IF/ICC:1:50-1:100 ELISA:Recommended starting concentration is 1 Mu g/mL. Please optimize the concentration based on your specific assay requirements.
Formulation	PBS with 0.09% Sodium Azide, 50% Glycerol, pH 7.3.
Isotype	IgG
Storage Instruction	Store at -20°C for up to 1 year from the date of receipt, and avoid repeat freeze-thaw cycles.

TARGET INFORMATION

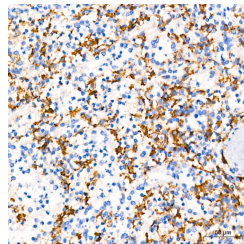
Gene ID	7124
Gene Symbol	TNF
Uniprot ID	TNFA_HUMAN
Immunogen	
Immunogen Region	134-233
Specificity	Recombinant fusion protein containing a sequence corresponding to amino acids 134-233 of human TNF-Alpha (NP_000585.2). IYSQVLFGQGCPSTHVLTT HTISRIAVSYQTKVNLLSAI KSPCQRETPEGAEAKPWYEP IYLGGVFQLEKGDRLSAEIN RPDYLDFAESGQVYFGIIAL
Immunogen Sequence	



Immunohistochemistry analysis of paraffin-embedded human colon carcinoma using TNF-Alpha rabbit polyclonal antibody (STJ25882) at dilution of 1:1000 (40x lens). Perform high pressure antigen retrieval with 10 mM citrate buffer pH 6. 0 before commencing with immunohistochemistry staining protocol.



Immunohistochemistry analysis of paraffin-embedded human liver using TNF-Alpha rabbit polyclonal antibody (STJ25882) at dilution of 1:1000 (40x lens). Perform high pressure antigen retrieval with 10 mM citrate buffer pH 6. 0 before commencing with immunohistochemistry staining protocol.



Immunohistochemistry analysis of paraffin-embedded human spleen using TNF-Alpha rabbit polyclonal antibody (STJ25882) at dilution of 1:1000 (40x lens). Perform high pressure antigen retrieval with 10 mM citrate buffer pH 6. 0 before commencing with immunohistochemistry staining protocol.

This product is suitable for in-vitro studies under the RESEARCH USE ONLY [RUO] licence. This product must not be used as for diagnostic or other medical purposes.
St John's Laboratory Ltd, Knowledge Dock Business Centre, University Way, London, E16 2RD | Tel: 0208 223 3081